

TUBTARA®

Blind rivet nuts

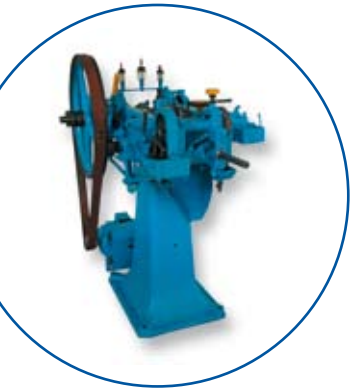
A close-up photograph of several blind rivet nuts, showing their threaded ends and cylindrical bodies. The image is partially framed by a blue arc.

TUBTARA® - your reliable connection



1901 Foundation of the company by the family Dejong

1938 Dejong starts to manufacture solid rivets



1954 Launch of the TUBTARA® blind rivet nut

1966 Dejong becomes one of the first European manufacturers producing cold formed blind rivet nuts

1989 The first stainless steel blind rivet nuts are coldformed

1996 ISO 9002 accreditation by BVQI (Bureau Veritas)

2000 Opening of an extension to the production facility

2002 ISO 9001/2000 accreditation by BVQI (Bureau Veritas)

2004 TUBTARA® celebrates its 50th birthday!

2005 Launch of the Tubtara® range in stainless steel 316
Zinktop : Dejong's new Cr^{VI}-free surface treatment

2007 Important investments in the production unit e.g.
new degreasing and tapping machines

2008 New heading machine for production of more difficult parts
First cold formed stainless M10 extends the Tubtara® product range

2009 Year dedicated to R&D despite the tough
economical situation worldwide

2010 Development of the Anti-turn Tubtara®



Contents

General Information

Dejond: An overview	2
Cold Forming Division	3
Tubtara® Blind Rivet Nuts	4-6
New development: Anti-turn Tubtara®	7

Stainless Steel 304 and 316 High corrosion resistance

304 316

Round, flat head, open/closed end	UPO / SPO / UPX / SPX	9-10	20-21
Round, countersunk head, open end	UFO / SFO	11	
Round, low profile head, open/closed end	UKO / SKO / UKX	12-13	22-23
Semi-hexagonal, flat head, open/closed end	HUPO / HUPX	14-15	24-25
Semi-hexagonal, low profile head, open/closed end	HUKO / HUKX	16-17	26-27
Unified thread: round, low profile head, open end	UKO	18	
Unified thread: semi-hexagonal, low profile head, open end	HUKO	19	

Steel

Round, flat head, open/closed end	UPO / SPO / UPX	28-29
Round, countersunk head, open/closed end	UFO / UFX	30-31
Round, low profile head, open/closed end	UKO / UKX	32-33
(Semi-)hexagonal, flat head, open/closed end	HUPO / HSPO / HUPX / HSPX	34-36
Hexagonal, low profile head, open/closed end	HUKO / HSKO / HUKX	37-38
Hexagonal, flat head, closed end , with seal under the head	HX	39
Splined, flat head, open end	UPO RS	40
Splined, countersunk head, open end	UFO RS	41

Aluminium

Round, flat head, open/closed end	UPO / UPX	42-43
Round, countersunk head, open/closed end	UFO / UFX	44-45
Round, low profile head, open end	UKO	46

Specials

47

Setting equipment

48-49

Technical information

50-54

Dejond: an overview

Started as a small metal stockist in 1901, Dejond turned into a leading and reputed supplier to the industry over the years. Located in Wilrijk (Antwerp), about 100 employees, spread over 4 business units, are dedicated to maintain the long term partnerships with their customers and suppliers around the globe and find new business opportunities.

Core business :

- stockkeeping wholesaler of non-ferrous metals with service center,
- distributor of exclusive architectural and building systems,
- industrial supplier of high quality, value-added mechanical fasteners and fastening systems,
- R&D, production, marketing and sales of Tubtara® blind rivet nuts (Cold Forming Division)

Dejond continuously aims to increase service and customer satisfaction. Considerable investments in all 4 business units over the years should help Dejond to strengthen its position of trendsetter and specialist in new technical developments.

The stylishly renovated building in Antwerp reflects Dejond's clear view for the future: professionalism. Dejond's name stands for high quality products, a multi-industry supply, prompt orderprocessing, on time deliveries and a reliable (aftersales-) service.

Dejond does not only deliver products, it primarily offers a strong customer support.



● Dejond: the industrial specialist in fastening technology

On its home market Dejond has become a major player in fastening technology by offering a full range of high quality mechanical fasteners manufactured by different internationally recognized suppliers, including its own Tubtara® blind rivet nut range. It serves the general, automotive and aerospace industries.

Thanks to the regular product trainings at the suppliers, its in house expertise and the continuous search for new products, Dejond's people are able to keep pace with the latest market requirements & trends. In strong partnership with its suppliers, Dejond tries to solve its customers' problems and offer the appropriate product for their specific applications.

In other words : offer a total quality solution.

● Cold Forming Division

In 1954 Dejong launched its first Tubtara® blind rivet nuts, machined on a lathe. Only 10 years later the production started specializing in cold forming technology. Today Dejong offers one of the widest, cold formed ranges of high quality blind rivet nuts in the world, all manufactured in its ISO 9001/2000 certified production facility in Wilrijk (Belgium).

The Tubtara® programme includes standard and special products in stainless steel 304 & 316, steel and aluminium.

The entire cold forming team is more than ever committed to meet the challenges that lie ahead. By manufacturing in an environmentally friendly way, it tries to minimize the influence of its activities on the environment and create a balance between economical, social and environmental aspects. Together with its focus on R&D, Dejong wants to reach the highest quality ever.

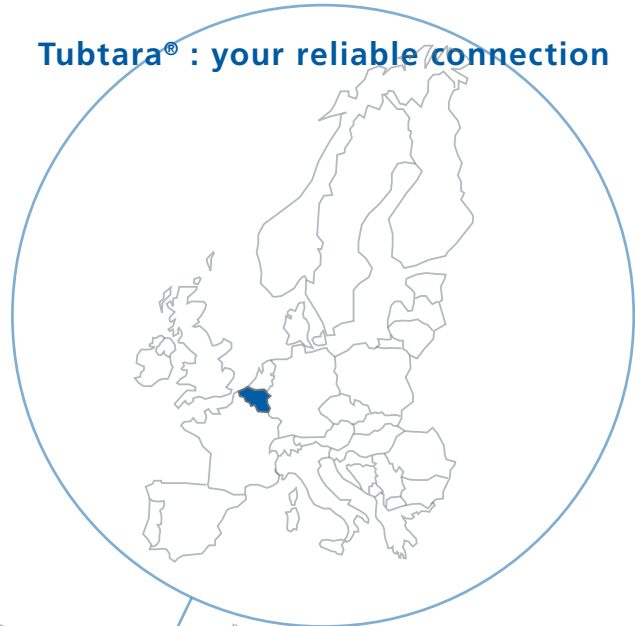
In that respect Dejong's management decided to further uplevel the Tubtara® range by investing in a new, advanced machine-unit. New developments and more difficult parts will gradually be introduced as from 2010.

Dejong has the ambition to stay at the forefront of the design and manufacture of blind rivet nuts.

Through short delivery times and a strong technical & commercial support Dejong tries to give its partners-distributors the opportunity to gain new applications worldwide. Thanks to its flexible stock availability and central location near the port of Antwerp and Brussels airport, customers of all continents receive their Tubtara® blind rivet nuts at short notice.



Tubtara® : your reliable connection



● Blind rivet nuts

A Tubtara® blind rivet nut is a mechanical fastener that ensures a strong thread in a thin sheet and is used in applications where there is little or no access at the rear. It can be used to clinch separate sheets together (acting as a rivet) and allows you to assemble another component with a bolt or screw.

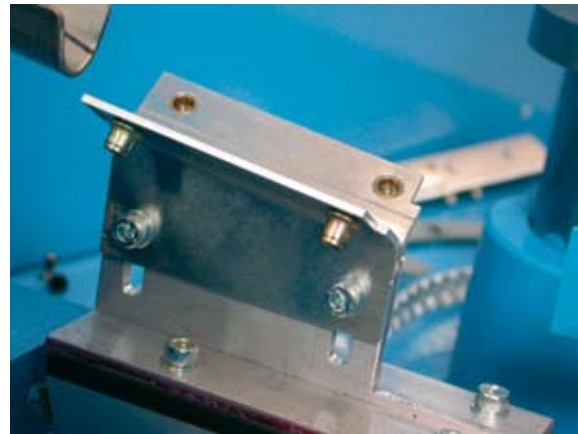
● Benefits

- Provides a strong thread in a thin sheet
- Simple blind (one sided) installation
- Fast assembly time
- Low assembly costs : easy installation with 1 single operation of the hand
- Avoids damaging the (pre-coated or - painted) surface of the workpiece
- No deformation of the workpiece
- Low installation cost : no expensive setting tools needed
- Works in close-to-edge applications
- Unloseable after setting
- Appropriate for repeated (re-)assembly

● Installation

Installing a Tubtara® blind rivet nut is very simple : screw the Tubtara® on the mandrel of the setting tool, bring it into the hole of the workpiece, pull lengthwise to set the Tubtara® and unscrew the mandrel. For more detailed information on the setting method see pg 50 .

A Tubtara® can be set with a hand- or pneumatic tool, a press or an automatic installation unit.



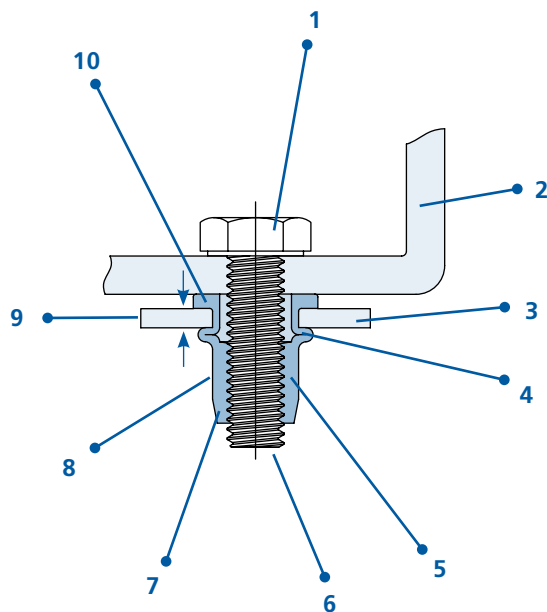
● Applications

A Tubtara® is used in all kinds of sheet metal applications. It avoids tapping, welding and working with a bolt and nut. It's a very good solution for enclosed applications that can only be accessed from one side.

Some marketsegments :

- Aerospace
- Automotive
- White Goods
- Electronics
- Metal furniture
- Railways
- Telecom
- Food
- Chemicals
- Lighting
- Marine
- Offshore
- Medical
- Pulp & paper
- etc...

e.g. cabinets, pipes, cable trays, leg levelling, window & door profiles, rails, benches, fences, metal enclosures, heating installations, airconditioning, swimming pools, solar panels etc.



Terminology

1. Screw or bolt inserted for assembly
2. Assembled part
3. Workpiece: can be 1 sheet or several sheets which have to be clinched
4. Bulb or counterhead: the chamber (un-threaded part) of the Tubtara® deformed during setting
5. Strong, secured internal thread of the Tubtara®
6. Open or closed end: closed version minimalizes the ingress of dirt & fluids especially in combination with an underhead seal (see HX-version pg 39)
7. Chamfer: leads the Tubtara® into the hole
8. Shank: round, (semi-)hexagonal or splined version
9. Grip: the exact material thickness of the workpiece
10. Head: flat, countersunk, low profile or watertight head - NEW : anti-turn head

Product Description

Steel	M5	RS	UFO	40
Stainless	M6	H	UKX	30
Aluminium	M8	-	UPO	80
↓	↓	↓	↓	↓
material	thread	shank	head & shank	max grip
		RS: splined	F: countersunk head	
		H: hexagonal	P: flat head	
		- : round	K: low profile head	
			O: open end	
			X: closed end	

How to choose the appropriate Tubtara® ?

- What kind of material and surface treatment do you need?
- What is the required thread size?
- Choose the correct grip range for the required material thickness of the application.
- Choose the required head and shank style.
- Do you need an open or closed version?
- Check the technical characteristics of the chosen Tubtara®.

We advise you to do some tests on the suitable product in the specific application on beforehand. **Samples are available on request.**



● Specials

Don't you find the appropriate Tubtara® in this catalogue?

Do you need a special Tubtara®, tailor-made for your specific application?

Always take the following into consideration:

- Give us an accurate description of the application.
- Do you have a drawing with indication of sizes, tolerances and exact sheet thickness?
- Are there other special features and important remarks we need to know?
- Can you give us a sample of the application and/or present fastener?
- Do you have special technical requirements like torque value, upset load, tensile or thread strength etc.?
- What type of setting equipment will be used?

Our R&D people will evaluate your request and our Sales Department will provide you with information.

● Anti-rotation solutions

There are different solutions to avoid the risk on rotation and increase the torque-to-turn resistance:

- A Tubtara® with hexagonal shank is a very effective solution against rotation.
- If you have applications in soft material such as plastics or soft aluminium, use our splined Tubtara® versions. When the splines protrude into the sheet during setting, your Tubtara® won't turn into the hole.
- Can you only use or drill round holes? Do you have an application in very hard or slippery material? Use our new Anti-Turn Tubtara® with special anti-turn head and reach the highest torque-to-turn values possible with a round shank (see info pg. 7).



ANTI-TURN Tubtara®

Round shank
Anti-turn flat head
Open / closed end
Steel, stainless, aluminium

High torque values
Easy to prepare
Easy to install



New Development

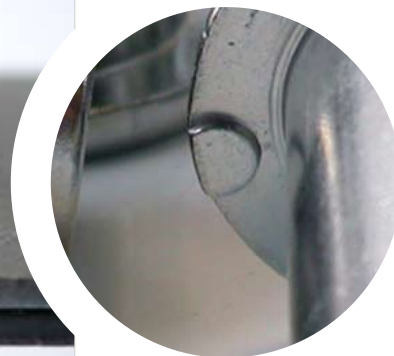
**Torque-to-turn value at least twice as high
as that of the equivalent round blind rivet nut**

● Applications

All applications where hexagonal holes are not allowed or difficult to make

● Important advantages

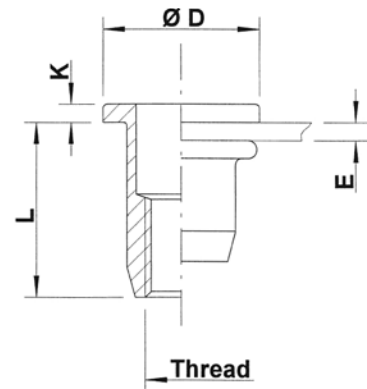
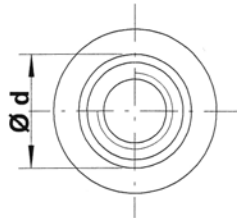
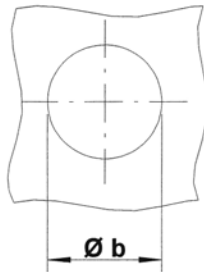
- very effective on slippery surfaces
- no damage of the surface (↔ splined blind rivet nuts)
- very effective in hard material (↔ splined blind rivet nuts)
- use of standard round holes, so no risk of cracks on the corners (↔ hexagonal blind rivet nuts)
- easy to install with a standard setting tool
- no problem to set automatically
- possible to combine different material of nut and sheet (↔ welding nuts)





Stainless Steel 304

Flat head
Round shank
Open end
UPO / SPO



Stainless Steel 304

THREAD	TYPE	E = grip	L	b ^{+0,1} = drill dia	d = shank dia	D	K	kg/1000	ORDER CODE	BOX Q
M4	UPO20	0,5-2,0	11,0	6,0	6,0	9,0	1,0	1,5	544 010	7500
	UPO35	2,0-3,5	12,5					1,6	544 020	5000
M5	UPO30	0,5-3,0	11,5	7,0	7,0	10,0	1,0	1,8	545 040	4000
	UPO50	3,0-5,0	15,0					2,2	545 050	3000
M6	UPO30	0,5-3,0	14,5	9,0	9,0	12,0	1,5	4,1	546 020	2000
	UPO50	3,0-5,0	16,5					4,4	546 035	2000
	UPO70	5,0-7,0	18,5					4,8	546 050*	-
M8	UPO30	0,5-3,0	16,0	11,0	11,0	15,0	1,5	6,1	548 010	1250
	UPO55	3,0-5,5	18,5					6,5	548 020	1250
M10	UPO30	0,8-3,0	18,5	12,1	12,0	15,0	1,0	5,9	540 020	1000
	UPO50	3,0-5,0	20,5					6,0	540 030	1000
M10	SPO35	0,8-3,5	21,5	13,0	13,0	17,0	1,5	10,2	540 600	750

* **Non-stock item:** minimum order quantity required after depletion of stock

All dimensions in mm

Technical data subject to modification

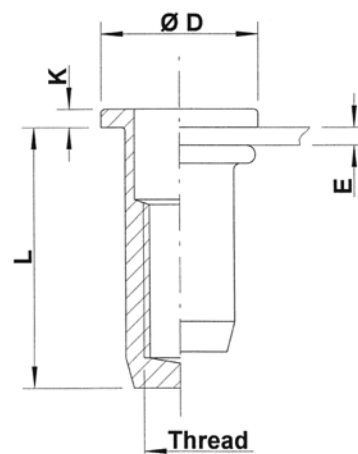
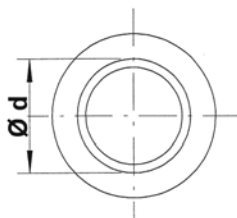
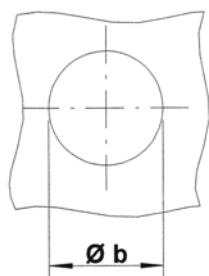




Stainless Steel 304

Flat head
Round shank
Closed end

UPX / SPX



THREAD	TYPE	E = grip	L	b ^{+0,1} = drill dia	d = shank dia	D	K	kg/1000	ORDER CODE	BOX Q
M4	UPX20	0,5-2,0	15,0	6,0	6,0	9,0	1,0	2,2	544 110	5000
M5	UPX30	0,5-3,0	17,5	7,0	7,0	10,0	1,0	3,0	545 180	2500
M6	UPX30	0,5-3,0	21,5	9,0	9,0	12,0	1,5	6,6	546 100	1500
	UPX50	3,0-5,0	23,5					-	546 105	-
M8	UPX30	0,5-3,0	23,5	11,0	11,0	15,0	1,5	9,9	548 065	1000
	UPX55	3,0-5,5	26,0					-	548 066	-
M10	SPX35	0,8-3,5	28,5	13,0	13,0	17,0	1,5	15,0	540 630	500

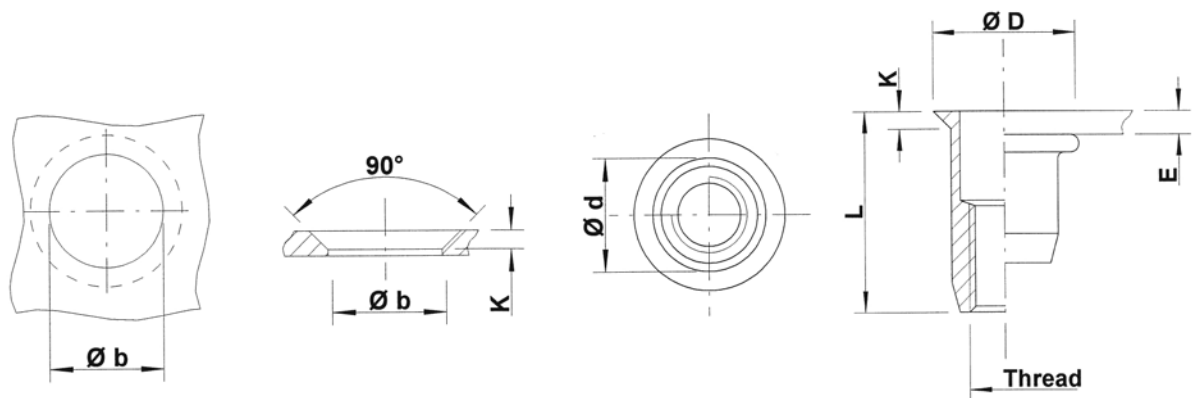
All dimensions in mm

Technical data subject to modification



Stainless Steel 304

Countersunk head
Round shank
Open end
UFO / SFO



Stainless Steel 304

THREAD	TYPE	E = grip	L	b ^{+0,1} = drill dia	d = shank dia	D	K	kg/1000	ORDER CODE	BOX Q
M4	UFO30	1,2-3,0	12,0	6,0	6,0	8,0	1,0	1,3	544 120	7500
M5	UFO35	1,2-3,5	12,0	7,0	7,0	9,0	1,0	1,6	545 200	5000
M6	UFO45	1,7-4,5	17,0	9,0	9,0	12,0	1,5	4,2	546 125	2000
M8	UFO45	1,7-4,5	17,5	11,0	11,0	14,0	1,5	5,5	548 070	1250
	UFO65	4,5-6,5	19,5					5,8	548 075	1250
M10	UFO45	1,7-4,5	20,0	12,1	12,0	15,0	1,5	5,9	540 090	1000
M10	SFO45	1,7-4,5	22,5	13,0	13,0	16,0	1,5	9,5	540 610	750

All dimensions in mm
Technical data subject to modification

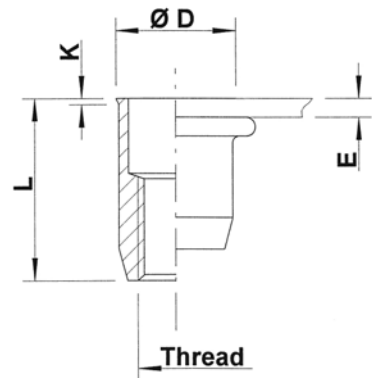
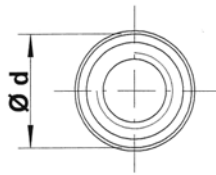
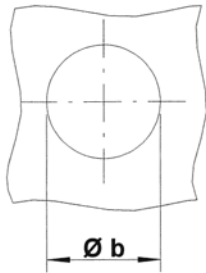




Stainless Steel 304

Low profile head
Round shank
Open end

UKO / SKO



THREAD	TYPE	E = grip	L	b ^{+0,1} = drill dia	d = shank dia	D	K	kg/1000	ORDER CODE	BOX Q
M4	UKO20	0,5-2,0	11,0	6,0	6,0	6,5	0,5	1,1	544 220	10000
M5	UKO30	0,5-3,0	12,0	7,0	7,0	7,5	0,5	1,5	545 400	5000
M6	UKO30	0,5-3,0	14,5	9,0	9,0	9,5	0,5	3,4	546 400	3000
M8	UKO30	0,5-3,0	16,0	11,0	11,0	11,5	0,5	5,0	548 160	2000
	UKO55	3,0-5,5	18,5					5,5	548 180	1500
M10	SKO35	0,8-3,5	21,0	13,0	13,0	13,5	0,5	8,5	540 620	1000

All dimensions in mm

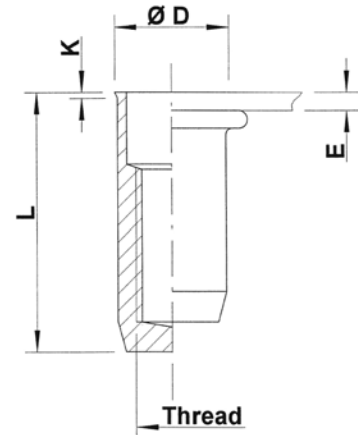
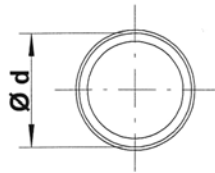
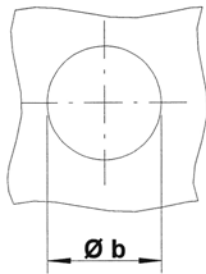
Technical data subject to modification



Stainless Steel 304

Low profile head
Round shank
Closed end

UKX



THREAD	TYPE	E = grip	L	b ^{+0,1} = drill dia	d = shank dia	D	K	kg/1000	ORDER CODE	BOX Q
M4	UKX20	0,5-2,0	15,0	6,0	6,0	6,5	0,5	1,9	544 250	5000
M5	UKX30	0,5-3,0	18,0	7,0	7,0	7,5	0,5	2,7	545 450	4000
M6	UKX30	0,5-3,0	21,5	9,0	9,0	9,5	0,5	5,8	546 450	2000
M8	UKX30	0,5-3,0	24,0	11,0	11,0	11,5	0,5	8,8	548 190	1250

M10: programme in progress

All dimensions in mm

Technical data subject to modification

Stainless Steel 304

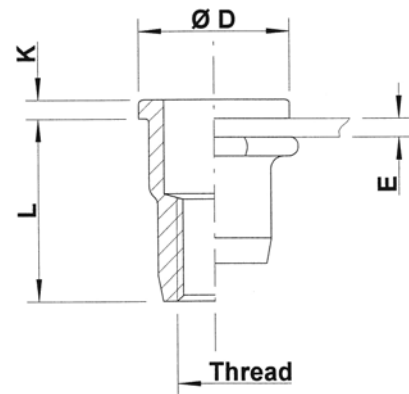
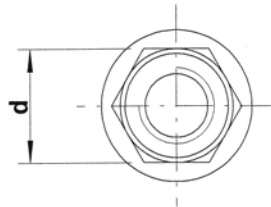
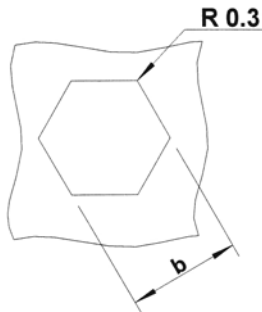




Stainless Steel 304

Flat head
Semi-hexagonal shank
Open end

HUPO



THREAD	TYPE	E = grip	L	b ^{+0,1} = hex hole	d = hex shank	D	K	kg/1000	ORDER CODE	BOX Q
M4	HUPO20	0,5-2,0	11,0	6,0	6,0	9,0	1,0	1,5	544 500	7500
M5	HUPO30	0,5-3,0	11,5	7,0	7,0	10,0	1,0	1,8	545 500	4000
M6	HUPO30	0,5-3,0	14,5	9,0	9,0	12,0	1,5	4,0	546 460	2500
M8	HUPO30	0,5-3,0	16,0	11,0	11,0	15,0	1,5	6,1	548 250	1250

M10: programme in progress

All dimensions in mm

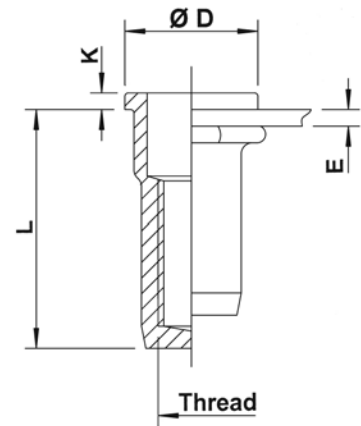
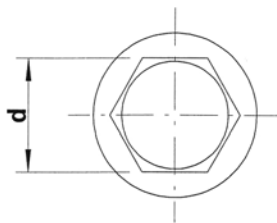
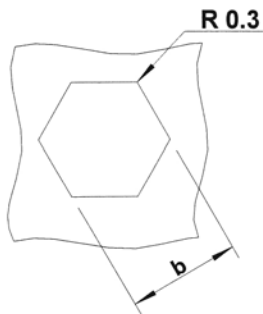
Technical data subject to modification



Stainless Steel 304

Flat head
Semi-hexagonal shank
Closed end

HUPX



Stainless Steel 304

THREAD	TYPE	E = grip	L	b ^{+0,1} = hex hole	d = hex shank	D	K	kg/1000	ORDER CODE	BOX Q
M4	HUPX20	0,5-2,0	15,0	6,0	6,0	9,0	1,0	2,2	544 520	5000
M5	HUPX30	0,5-3,0	17,5	7,0	7,0	10,0	1,0	3,0	545 520	2500
M6	HUPX30	0,5-3,0	21,5	9,0	9,0	12,0	1,5	6,6	546 470	1500
M8	HUPX30	0,5-3,0	23,5	11,0	11,0	15,0	1,5	9,6	548 260	750

M10: programme in progress

All dimensions in mm

Technical data subject to modification

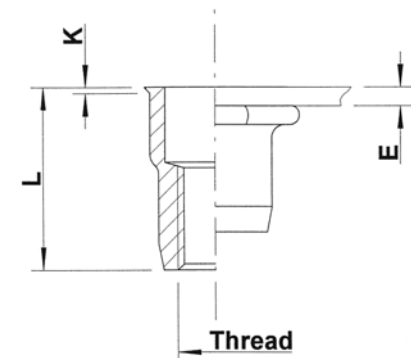
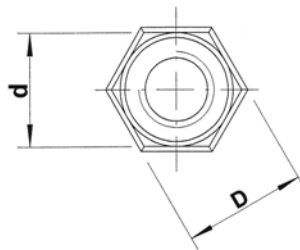
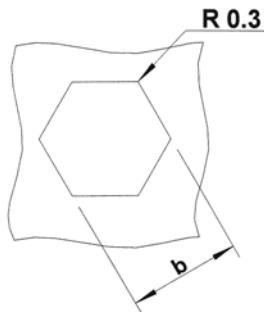




Stainless Steel 304

Low profile head
Semi-hexagonal shank
Open end

HUKO



THREAD	TYPE	E = grip	L	b ^{+0,1} = hex hole	d = hex shank	D = hex head	K	kg/1000	ORDER CODE	BOX Q
M4	HUKO20	0,5-2,0	11,0	6,0	6,0	6,5	0,5	1,2	544 600	7500
M5	HUKO30	0,5-3,0	12,0	7,0	7,0	7,5	0,5	1,5	545 600	5000
	HUKO50	3,0-5,0	14,0					-	545 605	-
M6	HUKO30	0,5-3,0	14,5					3,3	546 500	3000
	HUKO50	3,0-5,0	16,5	9,0	9,0	9,5	0,5	3,6	546 525	2500
	HUKO70	5,0-7,0	18,5					3,9	546 580*	2000
M8	HUKO30	0,5-3,0	16,0	11,0	11,0	11,5	0,5	4,9	548 300	2000
	HUKO55	3,0-5,5	18,5					-	548 305	-

M10: programme in progress

* **Non-stock item:** minimum order quantity required after depletion of stock

All dimensions in mm

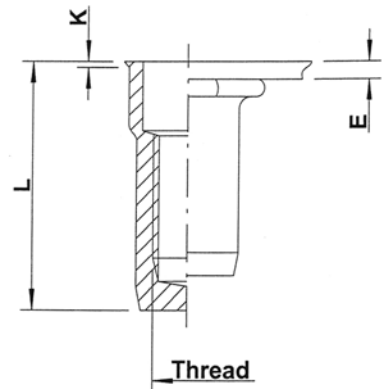
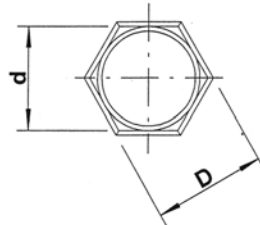
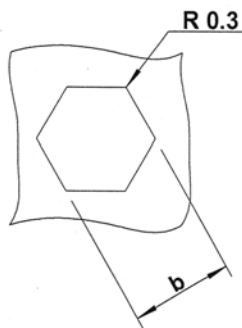
Technical data subject to modification



Stainless Steel 304

Low profile head
Semi-hexagonal shank
Closed end

HUKX



Stainless Steel 304

THREAD	TYPE	E = grip	L	b ^{+0,1} = hex hole	d = hex shank	D = hex head	K	kg/1000	ORDER CODE	BOX Q
M4	HUKX20	0,5-2,0	15,5	6,0	6,0	6,5	0,5	1,8	544 620	5000
M5	HUKX30	0,5-3,0	18,0	7,0	7,0	7,5	0,5	2,7	545 620	4000
	HUKX50	3,0-5,0	20,5					2,9	545 640	3000
M6	HUKX30	0,5-3,0	21,5	9,0	9,0	9,5	0,5	5,7	546 540	2000
	HUKX50	3,0-5,0	23,5					6,1	546 565	2000
M8	HUKX30	0,5-3,0	24,0	11,0	11,0	11,5	0,5	8,7	548 320	1000
	HUKX55	3,0-5,5	26,5					9,1	548 340	1000

M10: programme in progress

All dimensions in mm

Technical data subject to modification

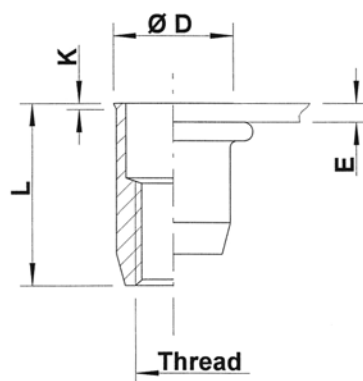
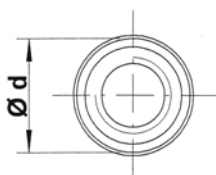
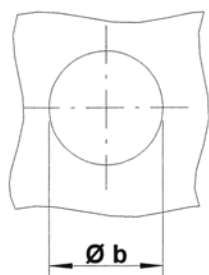




Stainless Steel 304

Low profile head
Round shank
Open end

UKO
UNIFIED THREAD



THREAD	TYPE	E = grip	L	b ^{+0,1} = drill dia	d = shank dia	D	K	kg/1000	ORDER CODE	BOX Q
10-32 UNF	UKO30	0,5-3,0	12,0	7,0	7,0	7,5	0,5	1,5	549 500	5000
1/4-20 UNC	UKO30	0,5-3,0	14,5	9,0	9,0	9,5	0,5	3,4	547 660	3000
5/16-18 UNC	UKO30	0,5-3,0	16,0	11,0	11,0	11,5	0,5	5,0	547 830	2000

All dimensions in mm

THREAD	TYPE	E = grip	L	b ^{+0.004} = drill dia	d = shank dia	D	K	lbs/1000	ORDER CODE	BOX Q
10-32 UNF	UKO30	.020-.118	0.472	0.276	0.276	0.295	.020	3.30	549 500	5000
1/4-20 UNC	UKO30	.020-.118	0.571	0.354	0.354	0.374	.020	7.49	547 660	3000
5/16-18 UNC	UKO30	.020-.118	0.630	0.433	0.433	0.453	.020	11.00	547 830	2000

All dimensions in inches

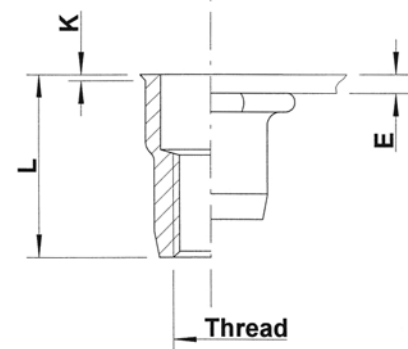
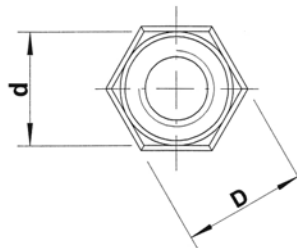
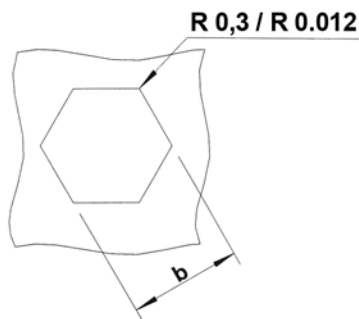
Technical data subject to modification



Stainless Steel 304

Low profile head
Semi-hexagonal shank
Open end

**HUKO
UNIFIED THREAD**



Stainless Steel 304

THREAD	TYPE	E = grip	L	b ^{+0,1} = hex hole	d = hex shank	D = hex head	K	kg/1000	ORDER CODE	BOX Q
10-32 UNF	HUKO30	0,5-3,0	12,0	7,0	7,0	7,5	0,5	1,5	549 530	5000
1/4-20 UNC	HUKO30	0,5-3,0	14,5	9,0	9,0	9,5	0,5	3,3	547 690	3000
5/16-18 UNC	HUKO30	0,5-3,0	16,0	11,0	11,0	11,5	0,5	4,9	547 850	2000

All dimensions in mm

THREAD	TYPE	E = grip	L	b ^{+0.004} = hex hole	d = hex shank	D = hex head	K	lbs/1000	ORDER CODE	BOX Q
10-32 UNF	HUKO30	.020-.118	0.472	0.276	0.276	0.295	.020	3.30	549 530	5000
1/4-20 UNC	HUKO30	.020-.118	0.571	0.354	0.354	0.374	.020	7.27	547 690	3000
5/16-18 UNC	HUKO30	.020-.118	0.630	0.433	0.433	0.453	.020	10.79	547 850	2000

All dimensions in inches

Technical data subject to modification





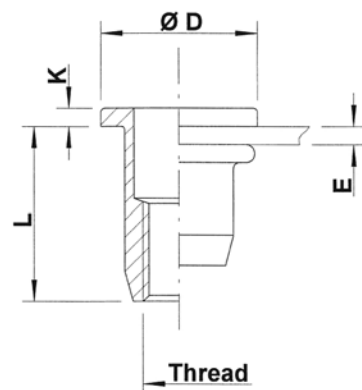
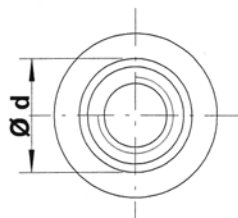
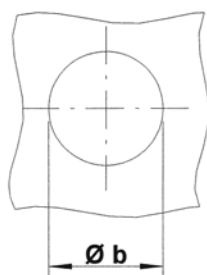
Stainless Steel 316

(contains > 2% Molybden)

Flat head
Round shank
Open end

UPO

extra high
corrosion resistance



THREAD	TYPE	E = grip	L	b ^{+0,1} = drill dia	d = shank dia	D	K	kg/1000	ORDER CODE	BOX Q
M4	UPO20	0,5-2,0	11,0	6,0	6,0	9,0	1,0	1,5	554 010	3000
M5	UPO30	0,5-3,0	11,5	7,0	7,0	10,0	1,0	1,8	555 040	2000
M6	UPO30	0,5-3,0	14,5	9,0	9,0	12,0	1,5	4,1	556 020	1000
	UPO50	3,0-5,0	16,5					4,5	556 035	1000
M8	UPO30	0,5-3,0	16,0	11,0	11,0	15,0	1,5	6,1	558 010	500

M10: programme in progress

Availability & other versions: please contact our Sales Department

All dimensions in mm

Technical data subject to modification



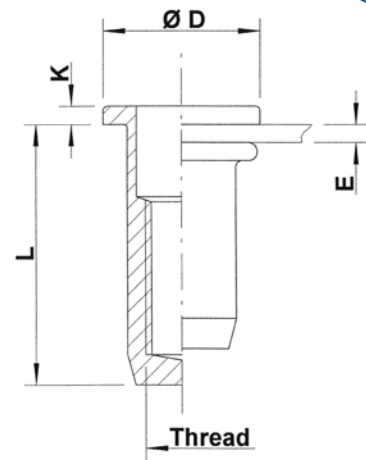
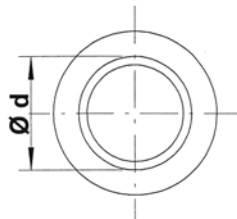
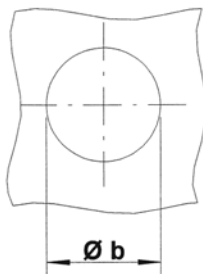
Stainless Steel 316

(contains > 2% Molybden)

extra high
corrosion resistance

Flat head
Round shank
Closed end

UPX



Stainless Steel 316

THREAD	TYPE	E = grip	L	b ^{+0,1} = drill dia	d = shank dia	D	K	kg/1000	ORDER CODE	BOX Q
M4	UPX20	0,5-2,0	15,0	6,0	6,0	9,0	1,0	2,2	554 110	-
M5	UPX30	0,5-3,0	17,5	7,0	7,0	10,0	1,0	3,0	555 180	1500
M6	UPX30	0,5-3,0	21,5	9,0	9,0	12,0	1,5	6,6	556 100	750
M8	UPX30	0,5-3,0	23,5	11,0	11,0	15,0	1,5	9,9	558 065	1000

M10: programme in progress

Availability & other versions: please contact our Sales Department

All dimensions in mm

Technical data subject to modification





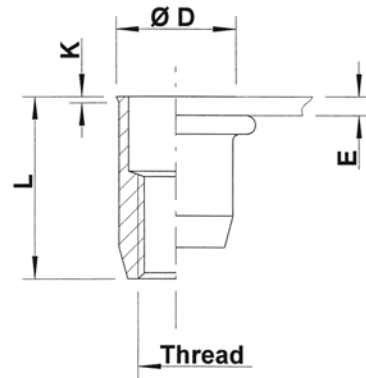
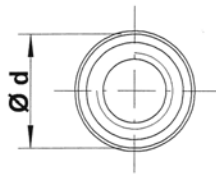
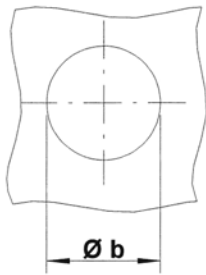
Stainless Steel 316

(contains > 2% Molybden)

Low profile head
Round shank
Open end

UKO

extra high
corrosion resistance



THREAD	TYPE	E = grip	L	b ^{+0,1} = drill dia	d = shank dia	D	K	kg/1000	ORDER CODE	BOX Q
M4	UKO20	0,5-2,0	11,0	6,0	6,0	6,5	0,5	1,2	554 220	3000
M5	UKO30	0,5-3,0	12,0	7,0	7,0	7,5	0,5	1,5	555 400	2000
M6	UKO30	0,5-3,0	14,5	9,0	9,0	9,5	0,5	3,4	556 400	1000
M8	UKO30	0,5-3,0	16,0	11,0	11,0	11,5	0,5	5,0	558 160	500

M10: programme in progress

Availability & other versions: please contact our Sales Department

All dimensions in mm

Technical data subject to modification



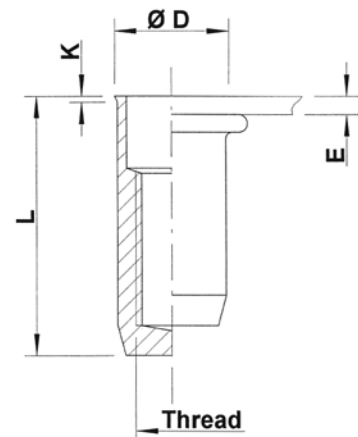
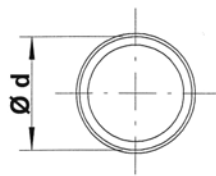
Stainless Steel 316

(contains > 2% Molybden)

extra high
corrosion resistance

Low profile head
Round shank
Closed end

UKX



Stainless Steel 316

THREAD	TYPE	E = grip	L	b ^{+0,1} = drill dia	d = shank dia	D	K	kg/1000	ORDER CODE	BOX Q
M4	UKX20	0,5-2,0	15,5	6,0	6,0	6,5	0,5	1,9	554 250	-
M5	UKX30	0,5-3,0	18,0	7,0	7,0	7,5	0,5	2,7	555 450	-
M6	UKX30	0,5-3,0	21,5	9,0	9,0	9,5	0,5	5,8	556 450	1000
M8	UKX30	0,5-3,0	24,0	11,0	11,0	11,5	0,5	8,8	558 190	-

M10: programme in progress

Availability & other versions: please contact our Sales Department

All dimensions in mm

Technical data subject to modification





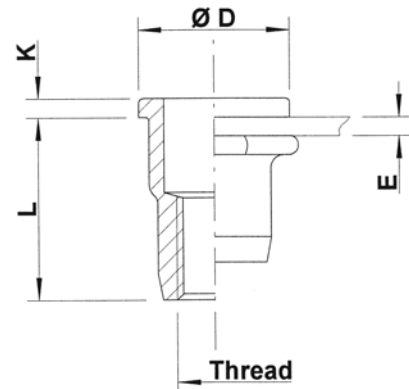
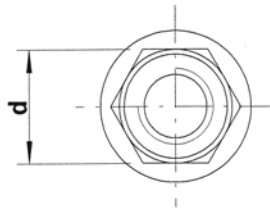
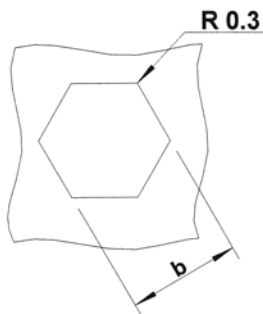
Stainless Steel 316

(contains > 2% Molybden)

Flat head
Semi-hexagonal shank
Open end

HUPO

extra high
corrosion resistance



THREAD	TYPE	E = grip	L	b ^{+0,1} = hex hole	d = hex shank	D	K	kg/1000	ORDER CODE	BOX Q
M4	HUPO20	0,5-2,0	11,0	6,0	6,0	9,0	1,0	1,5	554 500	-
M5	HUPO30	0,5-3,0	11,5	7,0	7,0	10,0	1,0	1,8	555 500	2000
M6	HUPO30	0,5-3,0	14,5	9,0	9,0	12,0	1,5	4,0	556 460	1000
M8	HUPO30	0,5-3,0	16,0	11,0	11,0	15,0	1,5	6,1	558 250	500

M10: programme in progress

Availability & other versions: please contact our Sales Department

All dimensions in mm

Technical data subject to modification



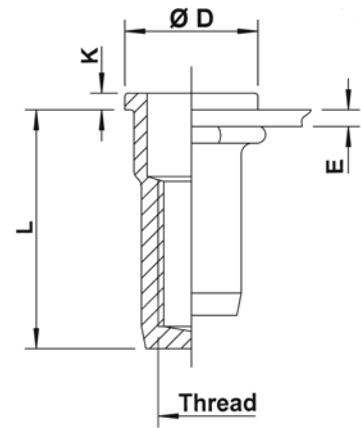
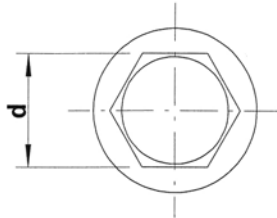
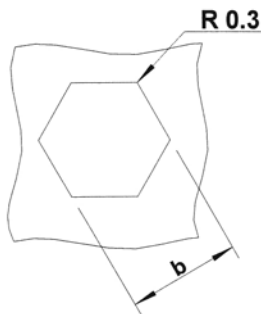
Stainless Steel 316

(contains > 2% Molybden)

extra high
corrosion resistance

Flat head
Semi-hexagonal shank
Closed end

HUPX



Stainless Steel 316

THREAD	TYPE	E = grip	L	b ^{+0,1} = hex hole	d = hex shank	D	K	kg/1000	ORDER CODE	BOX Q
M4	HUPX20	0,5-2,0	15,0	6,0	6,0	9,0	1,0	2,2	554 520	-
M5	HUPX30	0,5-3,0	17,5	7,0	7,0	10,0	1,0	3,0	555 520	1500
M6	HUPX30	0,5-3,0	21,5	9,0	9,0	12,0	1,5	6,6	556 470	750
M8	HUPX30	0,5-3,0	23,5	11,0	11,0	15,0	1,5	9,6	558 260	500

M10: programme in progress

Availability & other versions: please contact our Sales Department

All dimensions in mm

Technical data subject to modification





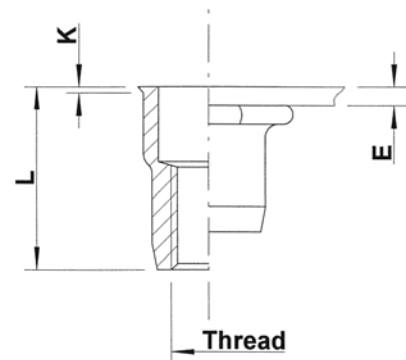
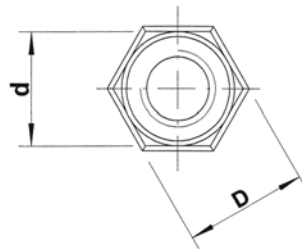
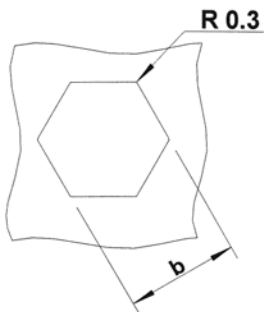
Stainless Steel 316

(contains > 2% Molybden)

Low profile head
Semi-hexagonal shank
Open end

HUKO

extra high
corrosion resistance



THREAD	TYPE	E = grip	L	b ^{+0,1} = hex hole	d = hex shank	D = hex head	K	kg/1000	ORDER CODE	BOX Q
M4	HUKO20	0,5-2,0	11,0	6,0	6,0	6,5	0,5	1,2	554 600	3000
M5	HUKO30	0,5-3,0	12,0	7,0	7,0	7,5	0,5	1,5	555 600	5000
M6	HUKO30	0,5-3,0	14,5	9,0	9,0	9,5	0,5	3,3	556 500	1000
M8	HUKO30	0,5-3,0	16,0	11,0	11,0	11,5	0,5	4,9	558 300	2000

M10: programme in progress

Availability & other versions: please contact our Sales Department

All dimensions in mm

Technical data subject to modification



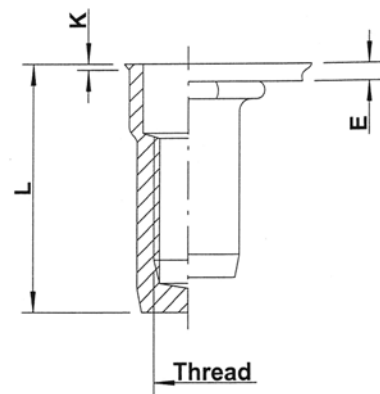
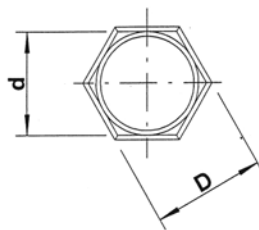
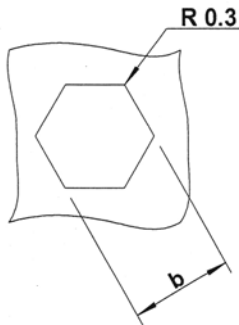
extra high
corrosion resistance

Stainless Steel 316

(contains > 2% Molybden)

Low profile head
Semi-hexagonal shank
Closed end

HUKX



Stainless Steel 316

THREAD	TYPE	E = grip	L	b ^{+0,1} = hex hole	d = hex shank	D = hex head	K	kg/1000	ORDER CODE	BOX Q
M4	HUKX20	0,5-2,0	15,5	6,0	6,0	6,5	0,5	1,8	554 620	2500
M5	HUKX30	0,5-3,0	18,0	7,0	7,0	7,5	0,5	2,7	555 620	2000
M6	HUKX30	0,5-3,0	21,5	9,0	9,0	9,5	0,5	5,7	556 540	1000
M8	HUKX30	0,5-3,0	24,0	11,0	11,0	11,5	0,5	8,7	558 320	500

M10: programme in progress

Availability & other versions: please contact our Sales Department

All dimensions in mm

Technical data subject to modification



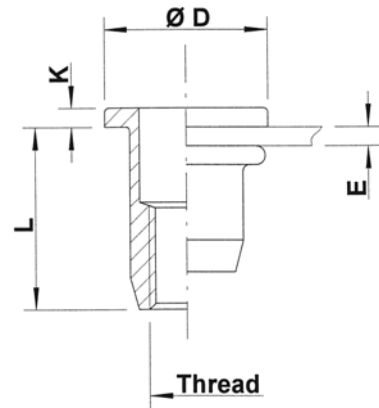
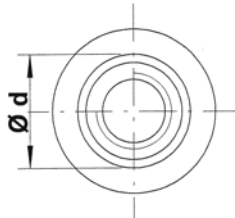
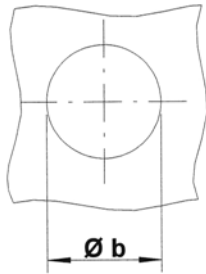


Steel

Flat head
Round shank
Open end

Zinktop, Cr^{VI} - free (A)
Zinc plated, yellow passivated (B)

UPO / SPO



THREAD	TYPE	E = grip	L	b ^{+0,1} = drill dia	d = shank dia	D	K	kg/1000	ORDER CODE (A)	ORDER CODE (B)	BOX Q
M3	UPO20	0,5-2,0	9,75	5,0	5,0	8,0	0,75	1,0	523 029	523 020*	10000
	UPO30	2,0-3,0	10,75					1,1	523 049*	523 040*	10000
M4	UPO30	0,5-3,0	10,75	6,0	6,0	10,0	0,75	1,5	524 029	524 020	5000
	UPO45	3,0-4,5	12,25					1,5	524 049	524 040	5000
M5	UPO30	0,5-3,0	12,0	7,0	7,0	11,0	1,0	2,1	525 029	525 020	4000
	UPO55	3,0-5,5	15,0					2,5	525 049	525 040	3000
M6	UPO30	0,5-3,0	14,5	9,0	9,0	13,0	1,5	4,3	526 029	526 020	2000
	UPO55	3,0-5,5	16,5					4,7	526 069	526 060	2000
	UPO80	5,5-8,0	19,0					5,0	526 089	526 080	1500
M8	UPO30	0,5-3,0	16,0	11,0	11,0	16,0	1,5	6,4	528 022	528 020	1250
	UPO55	3,0-5,5	18,5					7,0	528 069	528 060	1200
	UPO80	5,5-8,0	21,5					7,8	528 089	528 080	1000
M10	UPO35	0,8-3,5	19,75	12,5	12,4	18,5	2,25	9,8	520 029	520 020	750
	UPO60	3,5-6,0	22,75					10,8	520 049	520 040	700
M10	SPO35	0,8-3,5	21,0	13,0	13,0	19,0	2,0	11,4	520 609	520 600	750
	SPO60	3,5-6,0	24,0					12,1	520 629	520 620	500
M12	UPO40	1,0-4,0	25,0	16,0	16,0	23,0	2,0	19,6	522 029	522 020	400
	UPO70	4,0-7,0	28,0					21,1	522 059	522 050	300

* **Non-stock item:** minimum order quantity required after depletion of stock

All dimensions in mm

Technical data subject to modification



Steel

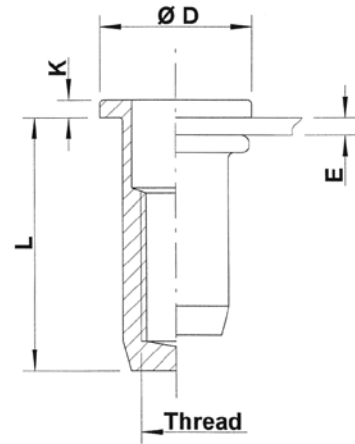
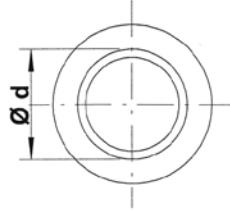
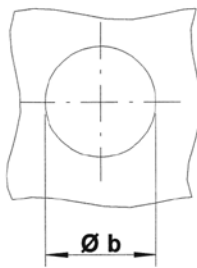
Flat head
Round shank
Closed end

Zinktop, Cr^{VI}- free (A)
Zinc plated, yellow passivated (B)

UPX



Steel



THREAD	TYPE	E = grip	L	b ^{+0,1} = drill dia	d = shank dia	D	K	kg/1000	ORDER CODE (A)	ORDER CODE (B)	BOX Q
M4	UPX30	0,5-3,0	14,75	6,0	6,0	10,0	0,75	2,1	524 189	524 180	5000
	UPX45	3,0-4,5	16,25					2,1	524 229*	524 220*	4000
M5	UPX30	0,5-3,0	18,0	7,0	7,0	11,0	1,0	3,4	525 169	525 160	2500
	UPX55	3,0-5,5	20,5					3,6	525 189*	525 180*	2500
M6	UPX30	0,5-3,0	21,5	9,0	9,0	13,0	1,5	6,8	526 169	526 160	1500
	UPX55	3,0-5,5	24,5					7,5	526 209	526 200	1250
M8	UPX30	0,5-3,0	22,5	11,0	11,0	16,0	1,5	9,7	528 189	528 180	1000
	UPX55	3,0-5,5	25,5					10,9	528 209	528 200	750

* **Non-stock item:** minimum order quantity required after depletion of stock

All dimensions in mm

Technical data subject to modification



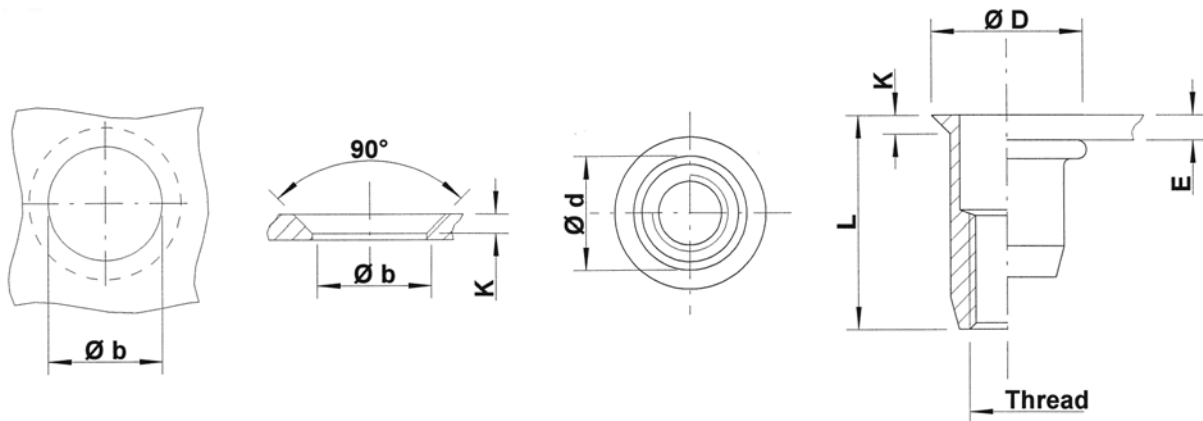


Steel

Countersunk head
Round shank
Open end

Zinktop, Cr^{VI} - free (A)
Zinc plated, yellow passivated (B)

UFO



THREAD	TYPE	E = grip	L	b ^{+0,1} = drill dia	d = shank dia	D	K	kg/1000	ORDER CODE (A)	ORDER CODE (B)	BOX Q
M3	UFO35	1,7-3,5	11,25	5,0	5,0	8,0	1,5	1,1	523 209	523 200*	10000
M4	UFO35	1,7-3,5	11,5	6,0	6,0	9,0	1,5	1,3	524 309	524 300	7500
	UFO50	3,5-5,0	13,0					1,5	524 329	524 320*	5000
M5	UFO40	1,7-4,0	13,0	7,0	7,0	10,0	1,5	2,0	525 269	525 260	5000
	UFO65	4,0-6,5	16,0					2,3	525 289	525 280	4000
M6	UFO45	1,7-4,5	17,0	9,0	9,0	12,0	1,5	4,2	526 309	526 300	2000
	UFO65	4,5-6,5	19,0					4,7	526 329	526 320	2000
M8	UFO45	1,7-4,5	19,0	11,0	11,0	14,0	1,5	6,3	528 269	528 260	1250
	UFO65	4,5-6,5	21,0					7,0	528 289	528 280	1250
M10	UFO45	1,7-4,5	21,0	12,5	12,4	15,4	1,5	7,6	520 229	520 220	1000
	UFO65	4,5-6,5	23,0					8,2	520 249	520 240	750
M12	UFO45	2,0-4,5	26,0	16,0	16,0	19,0	1,8	16,9	522 269	522 260	500
	UFO75	4,5-7,5	29,0					18,0	522 289	522 280	400

* **Non-stock item:** minimum order quantity required after depletion of stock

All dimensions in mm

Technical data subject to modification



Steel

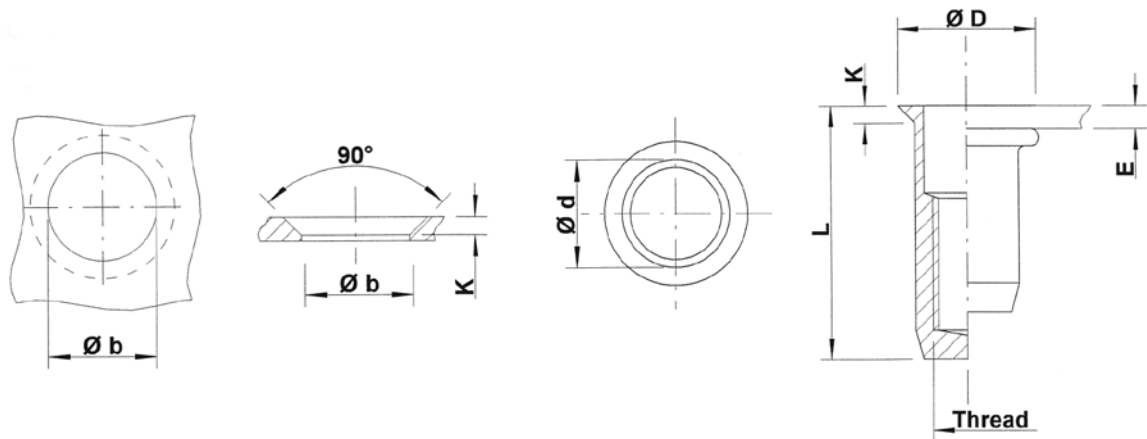
Countersunk head
Round shank
Closed end

Zinktop, Cr^{VI}- free (A)
Zinc plated, yellow passivated (B)

UFX



Steel



THREAD	TYPE	E = grip	L	b ^{+0,1} = drill dia	d = shank dia	D	K	kg/1000	ORDER CODE (A)	ORDER CODE (B)	BOX Q
M4	UFX35	1,7-3,5	15,5	6,0	6,0	9,0	1,5	2,0	524 449	524 440	5000
	UFX50	3,5-5,0	17,0					2,2	524 469*	524 460*	5000
M5	UFX40	1,7-4,0	18,0	7,0	7,0	10,0	1,5	3,0	525 389	525 380	3000
	UFX65	4,0-6,5	20,5					3,4	525 409*	525 400*	3000
M6	UFX45	1,7-4,5	22,0	9,0	9,0	12,0	1,5	6,1	526 409	526 400	1500
	UFX65	4,5-6,5	24,0					6,5	526 429*	526 420*	1500
M8	UFX45	1,7-4,5	25,0	11,0	11,0	14,0	1,5	9,2	528 369	528 360	1000
	UFX65	4,5-6,5	28,0					10,1	528 389*	528 380*	750

* **Non-stock item:** minimum order quantity required after depletion of stock

All dimensions in mm

Technical data subject to modification



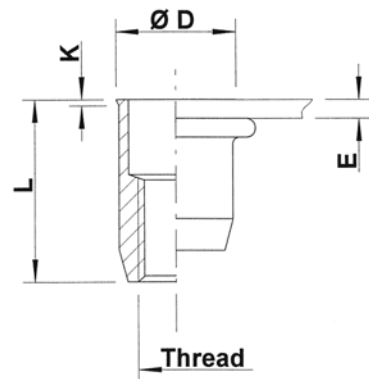
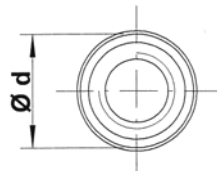


Steel

Low profile head
Round shank
Open end

Zinktop, Cr^{VI} - free (A)
Zinc plated, yellow passivated (B)

UKO



THREAD	TYPE	E = grip	L	b ^{+0,1} = drill dia	d = shank dia	D	K	kg/1000	ORDER CODE (A)	ORDER CODE (B)	BOX Q
M4	UKO30	0,5-3,0	10,75	6,0	6,0	6,5	0,5	1,1	524 529	524 520	10000
M5	UKO30	0,5-3,0	12,0	7,0	7,0	7,5	0,5	1,6	525 469	525 460	5000
	UKO55	3,0-5,5	15,0					1,8	525 489	525 480	4000
M6	UKO30	0,5-3,0	14,5	9,0	9,0	9,5	0,5	3,4	526 469	526 460	3000
	UKO55	3,0-5,5	16,5					3,7	526 489	526 480	2500
M8	UKO30	0,5-3,0	16,0	11,0	11,0	11,5	0,5	5,0	528 449	528 440	2000
	UKO55	3,0-5,5	18,5					5,5	528 459	528 450	1500
M10	UKO35	0,8-3,5	19,5	12,5	12,4	12,9	0,5	6,7	520 459	520 450	1250

All dimensions in mm
Technical data subject to modification



Steel

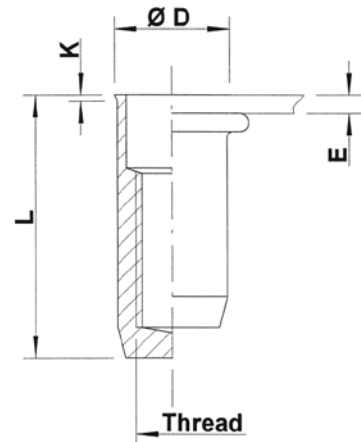
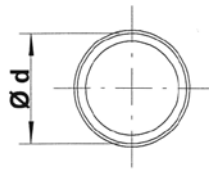
Low profile head
Round shank
Closed end

Zinktop, Cr^{VI}- free (A)
Zinc plated, yellow passivated (B)

UKX



Steel



THREAD	TYPE	E = grip	L	b ^{+0,1} = drill dia	d = shank dia	D	K	kg/1000	ORDER CODE (A)	ORDER CODE (B)	BOX Q
M4	UKX30	0,5-3,0	15,0	6,0	6,0	6,5	0,5	1,8	524 579	524 570*	5000
M5	UKX30	0,5-3,0	18,0	7,0	7,0	7,5	0,5	2,8	525 559	525 550*	4000
M6	UKX30	0,5-3,0	21,5	9,0	9,0	9,5	0,5	5,8	526 519	526 510*	2000
M8	UKX30	0,5-3,0	22,5	11,0	11,0	11,5	0,5	8,3	528 479	528 470*	1250

* **Non-stock item:** minimum order quantity required after depletion of stock

All dimensions in mm

Technical data subject to modification



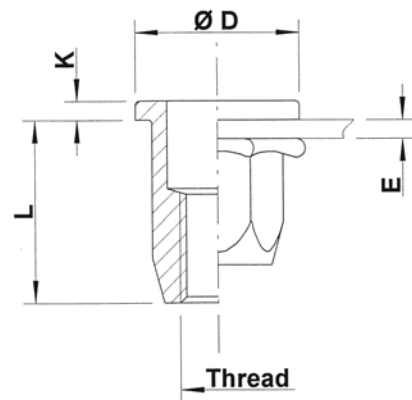
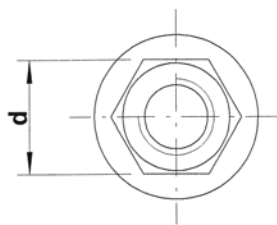
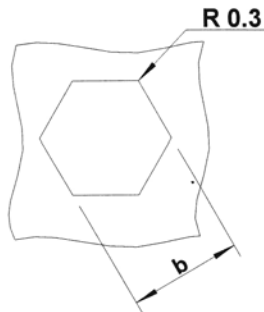


Steel

Flat head
Hexagonal shank
Open end

Zinktop, Cr^{VI} - free (A)
Zinc plated, yellow passivated (B)

HUPO / HSPO



THREAD	TYPE	E = grip	L	b ^{+0,1} = hex hole	d = hex shank	D	K	kg/1000	ORDER CODE (A)	ORDER CODE (B)	BOX Q
M4	HUPO20	0,5-2,0	10,0	6,0	6,0	9,0	1,0	1,4	524 589	524 580	7000
M5	HUPO30	0,5-3,0	13,0	7,0	7,0	10,0	1,0	2,3	525 569	525 560	4000
M6	HUPO30	0,5-3,0	14,5	9,0	9,0	13,0	1,5	4,7	526 529	526 520	2000
	HUPO55	3,0-5,5	16,5					4,8	526 549	526 540	1750
M8	HUPO30	0,5-3,0	16,5	11,0	11,0	16,0	1,5	7,0	528 482	528 480	1200
	HUPO55	3,0-5,5	19,0					7,5	528 509	528 500	1000
	HUPO80	5,5-8,0	22,0					8,1	528 609*	528 600*	750
M10	HSPO35	0,8-3,5	21,0	13,0	13,0	19,0	2,0	11,6	520 649	520 640	700
	HSPO60	3,5-6,0	23,5					12,3	520 659	520 650	500

* **Non-stock item:** minimum order quantity required after depletion of stock

All dimensions in mm

Technical data subject to modification



Steel

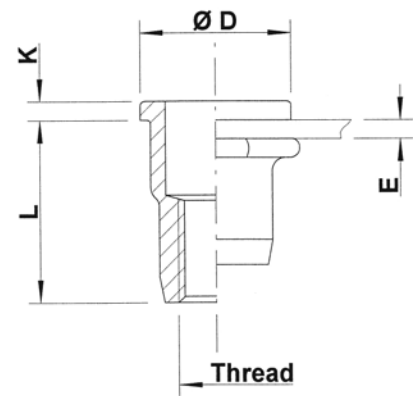
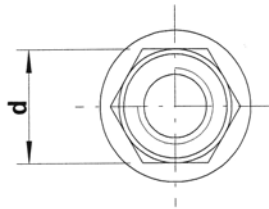
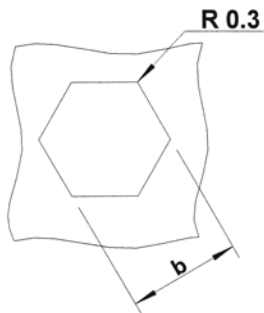
Flat head
Semi-hexagonal shank
Open end

Zinktop, Cr^{VI}- free (A)
Zinc plated, yellow passivated (B)

HUPO



Steel



THREAD	TYPE	E = grip	L	b ^{+0,1} = hex hole	d = hex shank	D	K	kg/1000	ORDER CODE (A)	ORDER CODE (B)	BOX Q
M12	HUPO40	1,0-4,0	25,0	16,0	16,0	23,0	2,0	19,6	522 509	522 500	350

All dimensions in mm

Technical data subject to modification



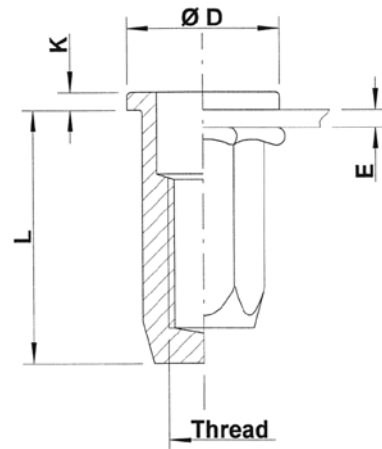
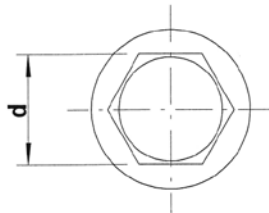
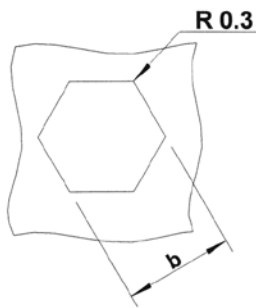


Steel

Flat head
Hexagonal shank
Closed end

Zinktop, Cr^{VI} - free (A)
Zinc plated, yellow passivated (B)

HUPX / HSPX



THREAD	TYPE	E = grip	L	b ^{+0,1} = hex hole	d = hex shank	D	K	kg/1000	ORDER CODE (A)	ORDER CODE (B)	BOX Q
M4	HUPX20	0,5-2,0	14,5	6,0	6,0	9,0	1,0	2,2	524 609*	524 600*	5000
M5	HUPX30	0,5-3,0	19,0	7,0	7,0	10,0	1,0	3,6	525 589	525 580	2500
	HUPX55	3,0-5,5	21,5					3,9	525 599*	525 590*	2500
M6	HUPX30	0,5-3,0	21,5	9,0	9,0	13,0	1,5	7,4	526 569	526 560	1500
	HUPX55	3,0-5,5	23,5					7,6	526 579*	526 570*	1500
M8	HUPX30	0,5-3,0	24,5	11,0	11,0	16,0	1,5	11,6	528 529	528 520	750
	HUPX55	3,0-5,5	27,0					12,2	528 539	528 530*	700
M10	HSPX35	0,8-3,5	31,0	13,0	13,0	19,0	2,0	19,0	520 654	520 655	400
	HSPX60	3,5-6,0	33,5					19,4	520 658*	520 656*	400

* **Non-stock item:** minimum order quantity required after depletion of stock

All dimensions in mm

Technical data subject to modification

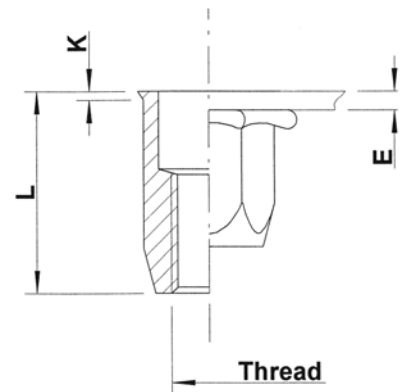
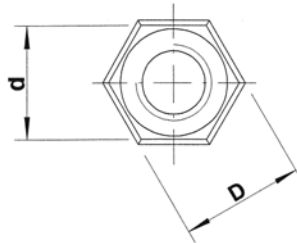
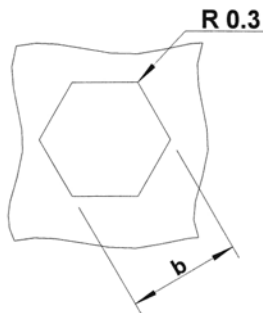


Steel

Low profile head
Hexagonal shank
Open end

Zinktop, Cr^{VI}- free (A)
Zinc plated, yellow passivated (B)

HUKO / HSKO



Steel

THREAD	TYPE	E = grip	L	b ^{+0,1} = hex hole	d = hex shank	D = hex head	K	kg/1000	ORDER CODE (A)	ORDER CODE (B)	BOX Q
M4	HUKO20	0,5-2,0	11,0	6,0	6,0	6,6	0,6	1,2	524 629	524 620	7500
M5	HUKO30	0,5-3,0	14,0	7,0	7,0	7,7	0,6	2,0	525 609	525 600	5000
	HUKO55	3,0-5,5	16,5					2,3	525 629	525 620*	4000
M6	HUKO30	0,5-3,0	16,0	9,0	9,0	9,8	0,7	4,2	526 589	526 580	2500
	HUKO55	3,0-5,5	18,5					4,6	526 609	526 600	2000
M8	HUKO30	0,5-3,0	18,0	11,0	11,0	11,8	0,7	6,2	528 549	528 540	1250
	HUKO55	3,0-5,5	20,5					6,9	528 569	528 560	1250
M10	HSKO35	0,8-3,5	23,0	13,0	13,0	13,8	0,7	10,5	520 669	520 660	750
	HSKO60	3,5-6,0	25,5					11,0	520 679	520 670*	700

* **Non-stock item:** minimum order quantity required after depletion of stock

All dimensions in mm

Technical data subject to modification



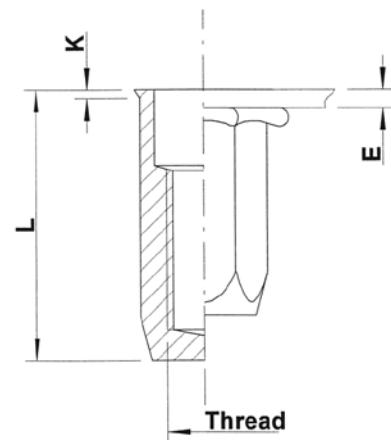
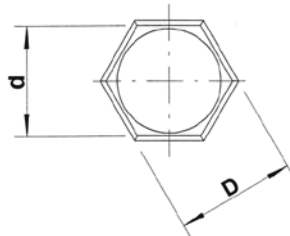
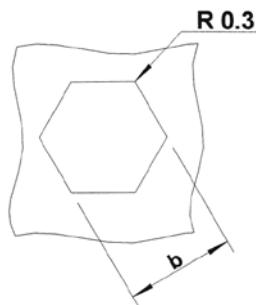


Steel

Low profile head
Hexagonal shank
Closed end

Zinktop, Cr^{VI} - free (A)
Zinc plated, yellow passivated (B)

HUKX



THREAD	TYPE	E = grip	L	b ^{+0,1} = hex hole	d = hex shank	D = hex head	K	kg/1000	ORDER CODE (A)	ORDER CODE (B)	BOX Q
M4	HUKX20	0,5-2,0	15,5	6,0	6,0	6,6	0,6	2,0	524 649	524 640	5000
M5	HUKX30	0,5-3,0	20,0	7,0	7,0	7,7	0,7	3,3	525 649	525 640	3000
M6	HUKX30	0,5-3,0	22,0	9,0	9,0	9,8	0,7	6,6	526 629	526 620	1750
M8	HUKX30	0,5-3,0	25,0	11,0	11,0	11,8	0,7	10,5	528 589	528 580	1000

All dimensions in mm
Technical data subject to modification



with seal
under the head

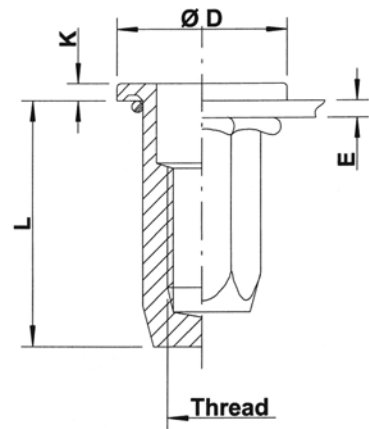
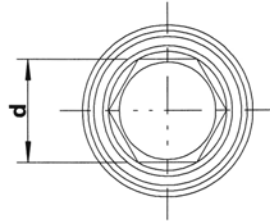
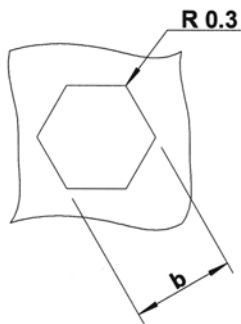
Steel

Flat head
Hexagonal shank
Closed end

Zinktop, Cr^{VI}- free (A)
Zinc plated, yellow passivated (B)



HX



Steel

THREAD	TYPE	E = grip	L	b ^{+0,1} = hex hole	d = hex shank	D	K	kg/1000	ORDER CODE (A)	ORDER CODE (B)	BOX Q
M5	HX3001	0,5-3,0	19,0	7,0	7,0	12,5	1,5	4,3	525 925*	525 916*	2500
M6	HX3001	0,5-3,0	21,5	9,0	9,0	15,0	1,5	8,0	526 942	526 920	1250
M8	HX3001	0,5-3,0	26,7	11,0	11,0	20,0	2,0	14,8	528 935	528 924	500

* **Non-stock item:** minimum order quantity required after depletion of stock

All dimensions in mm

Technical data subject to modification

Technical information about seal and storage: see page 54



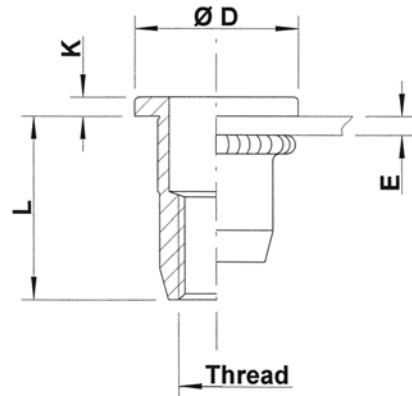
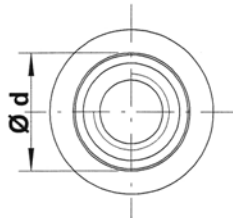
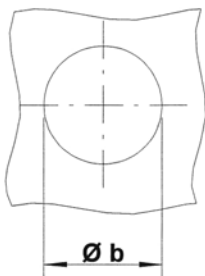


Steel

Flat head
Splined shank
Open end

Zinktop, Cr^{VI} - free (A)
Zinc plated, yellow passivated (B)

UPO RS



THREAD	TYPE	E = grip	L	b ^{+0,1} = drill dia	d = splined shank	D	K	kg/1000	ORDER CODE (A)	ORDER CODE (B)	BOX Q
M4	UPO30 RS	0,5-3,0	10,75	6,4	6,3	10,0	0,75	1,5	524 709	524 700	5000
	UPO45 RS	3,0-4,5	12,25					1,6	524 729*	524 720*	5000
M5	UPO30 RS	0,5-3,0	12,0	7,4	7,3	11,0	1,0	2,2	525 709	525 700	4000
	UPO55 RS	3,0-5,5	15,0					2,6	525 729	525 720	3000
M6	UPO30 RS	0,5-3,0	14,5	9,4	9,3	13,0	1,5	4,4	526 709	526 700	2000
	UPO55 RS	3,0-5,5	16,5					4,7	526 729	526 720	2000
M8	UPO30 RS	0,5-3,0	16,0	11,5	11,4	16,0	1,5	6,5	528 709	528 700	1250
	UPO55 RS	3,0-5,5	18,5					7,1	528 729	528 720	1200
M10	UPO35 RS	0,8-3,5	19,75	13,0	12,9	18,5	2,25	10,0	520 709	520 700	750
	UPO60 RS	3,5-6,0	22,75					10,8	520 729	520 720	750

* **Non-stock item:** minimum order quantity required after depletion of stock

UKO RS version: available on request

All dimensions in mm

Technical data subject to modification



Steel

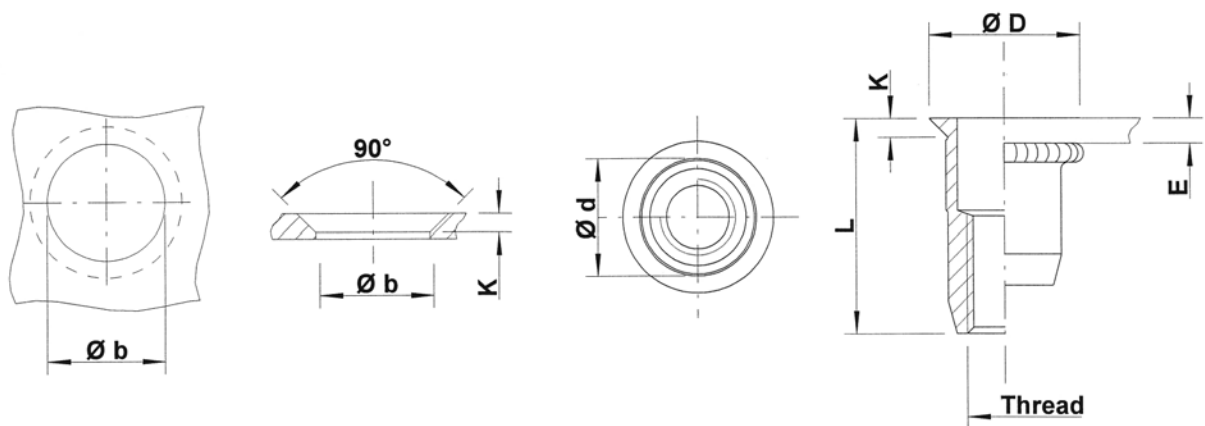
Countersunk head
Splined shank
Open end

Zinktop, Cr^{VI}- free (A)
Zinc plated, yellow passivated (B)

UFO RS



Steel



THREAD	TYPE	E = grip	L	b ^{+0,1} = drill dia	d = splined shank	D	K	kg/1000	ORDER CODE (A)	ORDER CODE (B)	BOX Q
M4	UFO35 RS	1,7-3,5	11,5	6,4	6,3	9,0	1,5	1,4	524 749	524 740*	7500
	UFO50 RS	3,5-5,0	13,0					1,5	524 769*	524 760*	5000
M5	UFO40 RS	1,7-4,0	13,0	7,4	7,3	10,0	1,5	2,1	525 749	525 740	5000
	UFO65 RS	4,0-6,5	16,0					2,4	525 769*	525 760*	4000
M6	UFO45 RS	1,7-4,5	17,0	9,4	9,3	12,0	1,5	4,4	526 769	526 760	2000
	UFO65 RS	4,5-6,5	19,0					4,7	526 789	526 780	2000
M8	UFO45 RS	1,7-4,5	19,0	11,5	11,4	14,0	1,5	6,4	528 749	528 740	1250
	UFO65 RS	4,5-6,5	21,0					6,8	528 769	528 760	1250
M10	UFO45 RS	1,7-4,5	21,0	13,0	12,9	15,4	1,5	7,9	520 749	520 740	750
	UFO65 RS	4,5-6,5	23,0					8,5	520 769	520 760	750

* **Non-stock item:** minimum order quantity required after depletion of stock

UKO RS version: available on request

All dimensions in mm

Technical data subject to modification

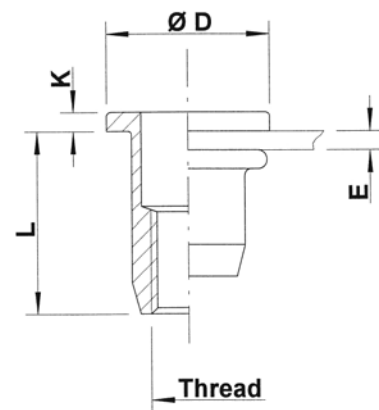
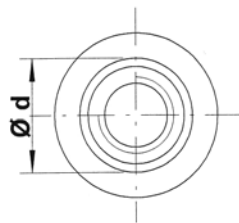
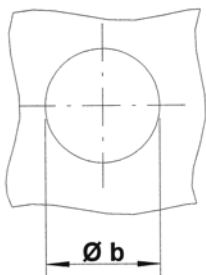




Aluminium

Flat head
Round shank
Open end

UPO



THREAD	TYPE	E = grip	L	b ^{+0,1} = drill dia	d = shank dia	D	K	kg/1000	ORDER CODE	BOX Q
M3	UPO20	0,5-2,0	9,75	5,0	5,0	8,0	0,75	0,4	513 050	10000
	UPO30	2,0-3,0	10,75					0,4	513 100*	10000
M4	UPO30	0,5-3,0	10,75	6,0	6,0	10,0	0,75	0,5	514 025	5000
	UPO45	3,0-4,5	12,25					0,5	514 050	5000
M5	UPO30	0,5-3,0	12,0	7,0	7,0	11,0	1,0	0,7	515 025	4000
	UPO55	3,0-5,5	15,0					0,8	515 050	3000
M6	UPO30	0,5-3,0	14,5	9,0	9,0	13,0	1,5	1,5	516 025	2000
	UPO55	3,0-5,5	16,5					1,6	516 075	2000
	UPO80	5,5-8,0	19,0					1,7	516 090*	1500
M8	UPO30	0,5-3,0	16,0	11,0	11,0	16,0	1,5	2,2	518 025	1250
	UPO55	3,0-5,5	18,5					2,4	518 050	1250
	UPO80	5,5-8,0	21,5					2,6	518 055*	1000
M10	UPO35	0,8-3,5	19,75	12,5	12,4	18,5	2,25	3,3	510 025	750
	UPO60	3,5-6,0	22,75					3,6	510 050*	700

* **Non-stock item:** minimum order quantity required after depletion of stock

All dimensions in mm

Technical data subject to modification



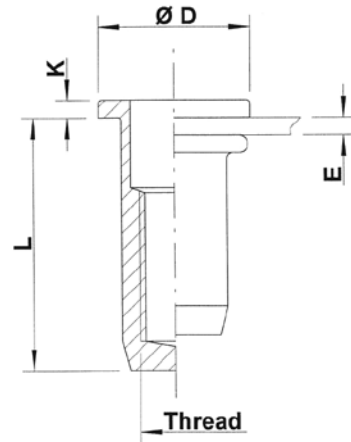
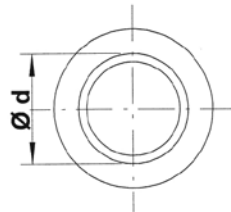
Aluminium

Flat head
Round shank
Closed end

UPX



Aluminium



THREAD	TYPE	E = grip	L	b ^{+0,1} = drill dia	d = shank dia	D	K	kg/1000	ORDER CODE	BOX Q
M3	UPX20	0,5-2,0	13,25	5,0	5,0	8,0	0,75	0,5	513 400*	7500
M4	UPX30	0,5-3,0	14,75	6,0	6,0	10,0	0,75	0,7	514 200	5000
	UPX45	3,0-4,5	16,25					0,7	514 225*	4000
M5	UPX30	0,5-3,0	18,0	7,0	7,0	11,0	1,0	1,1	515 175	2500
	UPX55	3,0-5,5	20,5					1,2	515 200*	2500
M6	UPX30	0,5-3,0	21,5	9,0	9,0	13,0	1,5	2,3	516 175	1500
	UPX55	3,0-5,5	24,5					2,5	516 200*	1500
M8	UPX30	0,5-3,0	22,5	11,0	11,0	16,0	1,5	3,5	518 125	750
	UPX55	3,0-5,5	25,5					3,9	518 150*	750

* **Non-stock item:** minimum order quantity required after depletion of stock

All dimensions in mm

Technical data subject to modification

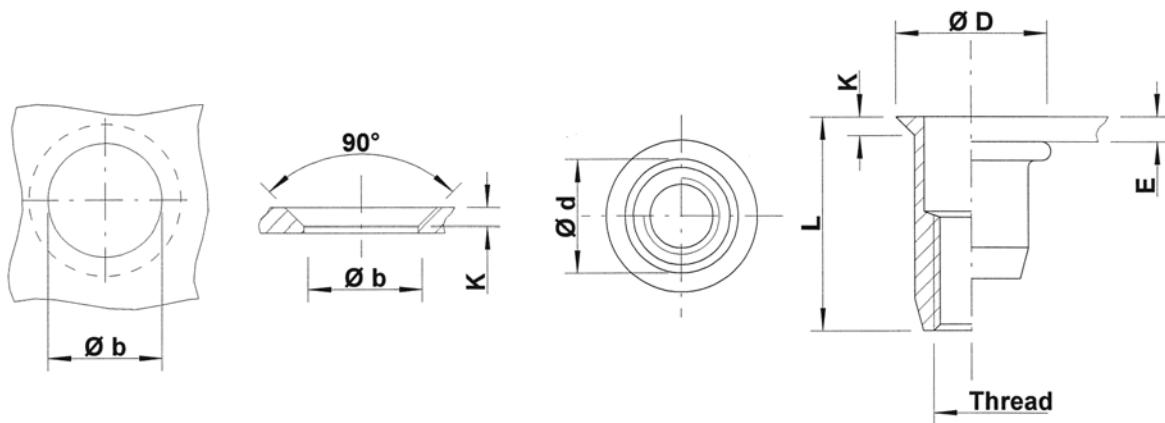




Aluminium

Countersunk head
Round shank
Open end

UFO



THREAD	TYPE	E = grip	L	b ^{+0,1} = drill dia	d = shank dia	D	K	kg/1000	ORDER CODE	BOX Q
M3	UFO35	1,7-3,5	11,25	5,0	5,0	8,0	1,5	0,4	513 550	10000
M4	UFO35 UFO50	1,7-3,5 3,5-5,0	11,5 13,0	6,0	6,0	9,0	1,5	0,5 0,5	514 350 514 375	7500 5000
M5	UFO40 UFO65	1,7-4,0 4,0-6,5	13,0 16,0	7,0	7,0	10,0	1,5	0,7 0,8	515 250 515 275	5000 4000
M6	UFO45 UFO65	1,7-4,5 4,5-6,5	17,0 19,0	9,0	9,0	12,0	1,5	1,5 1,6	516 250 516 275	2000 2000
M8	UFO45 UFO65	1,7-4,5 4,5-6,5	19,0 21,0	11,0	11,0	14,0	1,5	2,1 2,2	518 175 518 200*	1250 1250
M10	UFO45 UFO65	1,7-4,5 4,5-6,5	21,0 23,0	12,5	12,4	15,4	1,5	2,5 2,7	510 250* 510 275*	1000 1000

* **Non-stock item:** minimum order quantity required after depletion of stock

All dimensions in mm

Technical data subject to modification



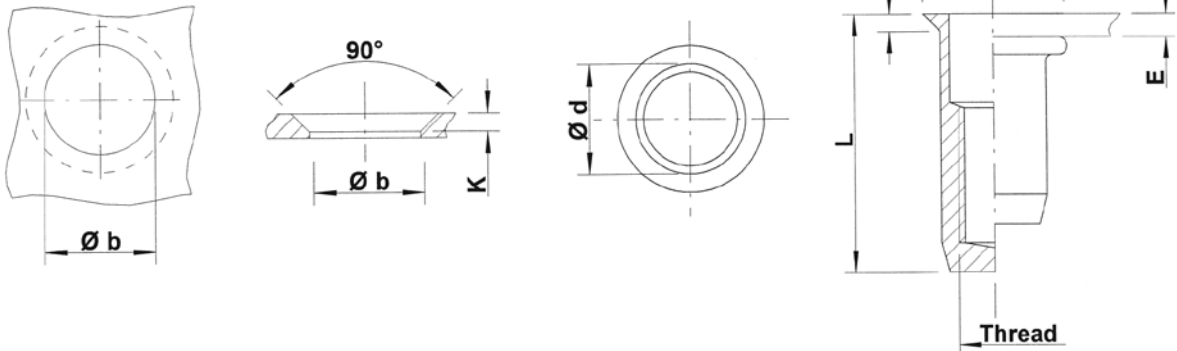
Aluminium

Countersunk head
Round shank
Closed end

UFX



Aluminium



THREAD	TYPE	E = grip	L	b ^{+0,1} = drill dia	d = shank dia	D	K	kg/1000	ORDER CODE	BOX Q
M4	UFX35	1,7-3,5	15,5	6,0	6,0	9,0	1,5	0,7	514 450	5000
	UFX50	3,5-5,0	17,0					0,7	514 475*	
M5	UFX40	1,7-4,0	18,0	7,0	7,0	10,0	1,5	1,0	515 375	3000
	UFX65	4,0-6,5	20,5					1,1	515 400*	
M6	UFX45	1,7-4,5	22,0	9,0	9,0	12,0	1,5	2,1	516 400	1500
	UFX65	4,5-6,5	24,0					2,3	516 425*	
M8	UFX45	1,7-4,5	25,0	11,0	11,0	14,0	1,5	3,3	518 325*	1000
	UFX65	4,5-6,5	28,0					3,7	518 350*	

* **Non-stock item:** minimum order quantity required after depletion of stock

All dimensions in mm

Technical data subject to modification

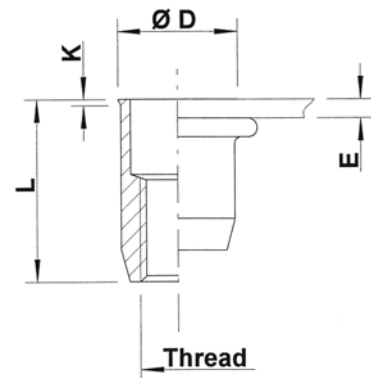
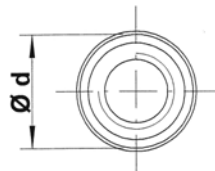




Aluminium

Low profile head
Round shank
Open end

UKO



THREAD	TYPE	E = grip	L	b ^{+0,1} = drill dia	d = shank dia	D	K	kg/1000	ORDER CODE	BOX Q
M4	UKO30	0,5-3,0	10,75	6,0	6,0	6,5	0,5	0,4	514 525	10000
M5	UKO30	0,5-3,0	12,0	7,0	7,0	7,5	0,5	0,5	515 500	5000
M6	UKO30	0,5-3,0	14,5	9,0	9,0	9,5	0,5	1,2	516 500	3000
M8	UKO30	0,5-3,0	16,0	11,0	11,0	11,5	0,5	1,8	518 450	2000

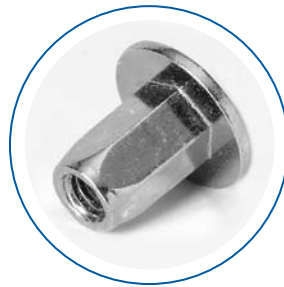
All dimensions in mm

Technical data subject to modification



Specials: manufactured on request

Extra large flat head
Hexagonal shank
Open end



Application:
Automotive: special assembly
with large surface contact

Extra thick flat head
Short hexagonal shank
Closed end



Application:
Building systems: spacer in
window profiles

Flat head with two cross flats
Round shank
Open end



Application:
Outdoor: fences

Flat head with special
small diameter spacer
Splined shank
Open end



Application:
White Goods Industry:
spacer used as guide to
find exact position.

Extra large head diameter
No deformation chamber
Splined shank
Open end



Application:
Automotive: generator
assembly

Stainless Steel
Flat head
Semi-hexagonal shank
Open end
With lock in the thread



Application:
Aerospace

Do you need a special solution for your application?
Complete the "Request form" on our website and we provide you with all necessary information!



Setting equipment

Hand tools to set blind rivet nuts



● DFS 307 T

Compact & practical hand tool for light duty assembly.

Capacity:

Alu: M3 - M6

Steel: M3 - M5



● DFS 311 T

Strong and reliable hand tool for heavy duty assembly in the field.

Capacity:

Steel & Alu: M6 - M12

Stainless steel: M6 - M10



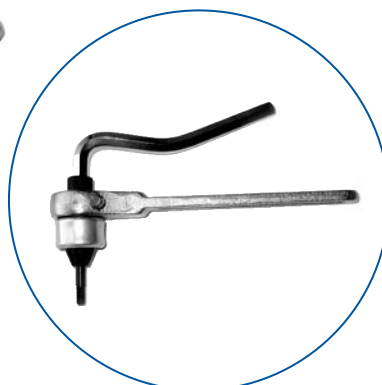
● NM 1

Small hand tool for prototype work and repairs.

Capacity:

Steel & Alu: M4 - M12

Stainless steel: M4 - M6





● DFS 309 T

Heavy duty hand tool for field and low volume production use.
Push and pull mechanism.

Capacity:

All materials: M4 - M10

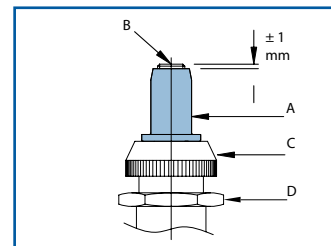
Technical information

● Setting method

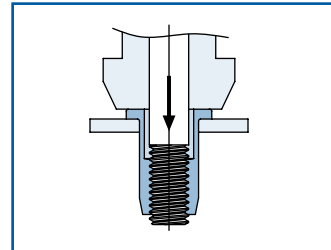
Select one of the Tubtara® blind rivet nuts out of our product range and a setting tool adequate for the application. Take a test workpiece and drill an appropriate hole

Screw the Tubtara® (A) on the mandrel (B) of the setting tool. For an open version the mandrel should protrude about 1 mm, for a closed one until you feel resistance.

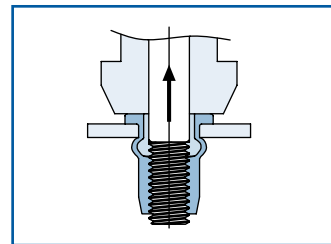
Screw the anvil (C) against the head of the Tubtara® and block it with the locking nut (D).



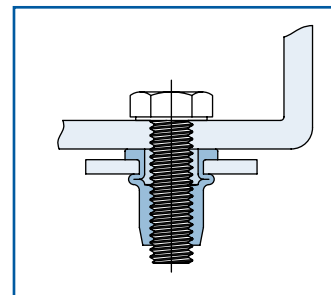
Introduce the Tubtara® mounted on the setting tool, into the hole of the workpiece.



Set the Tubtara®. The deformation chamber of the Tubtara® is now forming the counterhead on the underside of the workpiece (bulb). Unscrew the mandrel from the Tubtara®.

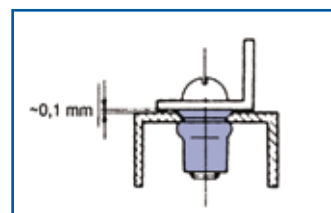


The Tubtara® is set. Now you can easily insert your bolt or screw to assemble a component.



● Countersunk heads

When you use a Tubtara® with a countersunk head, always countersink at 90° so that the head of the installed Tubtara® protrudes about 0,1 mm above your workpiece. This ensures direct contact with the assembled component.



Don't you have the possibility to countersink?
Use a low profile head!

● General tolerances

	Head form	Dimensions in mm	Dimensions in inches
D (head diameter)	Flat head Countersunk head Low profile head	$\pm 0,35$ $0 -0,5$ $-0,15 +0,3$	$\pm .014$ $0 -.020$ $-.006 +.012$
K (head thickness)	Flat head Countersunk head Low profile head	$\pm 0,15$ $0 +0,3$ $-0,05 +0,3$	$\pm .006$ $0 +.012$ $-.002 +.012$
L (length)	General Stainless M10 shank 13 mm	$\pm 0,35$ $\pm 0,5$	$\pm .014$ $\pm .020$
Metric thread= 6H			
Shank size	General Splined shank M10 shank 12,4 mm	$-0,02 -0,15$ $\pm 0,08$ $\pm 0,08$	$-.001 -.006$ $\pm .003$ $\pm .003$

● Material specification (subject to modification)

Aluminium: ALMG 2,5
Steel: QST 34-3
Stainless steel 304: 304 Cu
Stainless steel 316: 316 Cu
...or equivalent.

● Surface treatment on Tubtara® blind rivet nuts in steel

Zinktop

High-quality Cr^{VI} -free plating
WEEE / ROHS compliant
96 h white rust - 480 h red rust
10 μ ±2 μ

Zinc plated, yellow passivated

96 h white rust - 240 h red rust
10 μ ±2 μ

other surface treatments on request

● Reach

Please contact our Sales Department for all information.

Don't hesitate to contact us, if you need additional info.

● Mechanical characteristics

Can be used as a guidance for other versions

TYPE	Grip mm	ALUMINIUM			STEEL			STAINLESS STEEL 304 + 316		
		LOAD N	STROKE mm	THREAD N	LOAD N	STROKE mm	THREAD N	LOAD N	STROKE mm	THREAD N
M3 UPO 20	1	2000	2	3750	4000	2,5	> 5000			
	2	2600	1,5	3280	4750	2	> 5000			
M3 UPO 30	2	1850	1,5	3900	3700	2,5	> 5000			
	3	2050	1	3968	4750	2	> 5000			
M4 UPO 20	1							4900	2	> 9000
	2							5500	1,5	> 9000
M4 UPO 30	1	2100	3	5170	4300	2,5	> 8000			
	3	2430	1	4330	5650	1,5	> 8000			
M4 UPO 35	2							5500	2,6	> 9000
	3,5							6000	1,7	> 9000
M4 UPO 45	3	2050	2,75	4838	4200	2,5	> 8000			
	4,5	2875	1,5	4421	5000	1,5	> 8000			
M5 UPO 30	1	3050	3,5	5500	6150	3,5	12240	7500	3	> 15000
	3	3650	2	5000	7200	2,5	9600	8500	1,7	> 15000
M5 UPO 50	3							7500	4	> 15000
	5							8500	2	> 15000
M5 UPO 55	3	3000	3,5	6450	5750	4	11800			
	5,5	4300	1,5	5525	9650	2	10300			
M6 UPO 30	1	4500	3	11000	9400	4	21200	11850	4	> 24000
	3	5750	2	10000	12000	3	18500	14460	3	> 24000
M6 UPO 50	3							13500	4,5	> 24000
	5							15000	2,75	> 24000
M6 UPO 55	3	4500	3,5	11000	9000	3,5	22700			
	5,5	6100	1,75	10000	11000	2	19700			

Upset Load: Force (in Newton) necessary to deform the Tubtara® referred to in an adequate way.

Upset Stroke: Stroke (in mm) that should be set on the setting tool to give the Tubtara® referred to, the adequate deformation.

Ultimate Thread Strength: Surpassing this ultimate force (in Newton), the thread of the set Tubtara® will be pulled out.

Can be used as a guidance for other versions

TYPE	Grip mm	ALUMINIUM			STEEL			STAINLESS STEEL 304 + 316		
		LOAD N	STROKE mm	THREAD N	LOAD N	STROKE mm	THREAD N	LOAD N	STROKE mm	THREAD N
M6 UPO 80	5,5	4950	4,7	9160	8700	4	19900			
	8	5400	2	8200	11750	2,5	17200			
M8 UPO 30	1	5000	3	14900	11500	4	30400	14500	4,2	> 41000
	3	6600	2	14000	13750	2,5	26100	18000	2,8	> 41000
M8 UPO 55	3	5400	4	15500	11500	4	32500	14500	5,5	> 41000
	5,5	7400	2	11200	15500	2,5	31900	18500	3	> 41000
M8 UPO 80	5,5	5900	4	16100	10700	4	32400			
	8	7850	2	13600	14700	2,5	26500			
M10 UPO 30	1							14500	3,5	> 45000
	3							18500	2,5	> 45000
M10 UPO 35	1	6750	4	22100	13600	4,5	39600			
	3,5	9000	2,5	17700	17000	2,5	32400			
M10 UPO 50	3							14500	3,5	> 39500
	5							18500	2,5	> 37000
M10 UPO 60	3,5	9000	5	25250	14900	4	42300			
	6	13000	3	23000	17900	2,5	31700			
M10 SPO 35	1				13500	4,5	40500	19500	4,5	> 45000
	3,5				16100	2,5	36100	26500	3,5	> 45000
M10 SPO 60	3,5				15900	5,5	48000			
	6				20400	3	37500			
M12 UPO 40	1				19500	5,5	> 50000			
	4				25000	4	> 50000			
M12 UPO 70	4				19500	5,5	> 50000			
	7				25000	4	> 50000			

The mentioned values are average reference values only.

We strongly advise the customer to do his own tests in the proper material thickness and specific application.

● TUBTARA® with seal under the head (for productinfo see page 39)

Information about NBR O-Ring & compatibility with other products					
Shore Hardness	70 - 95	Aromatic Hydrocarbons	x	Lye	x
Hydraulic fluids	xxxx	Aliphatic Hydrocarbons	xxx	Chlorinated Hydrocarbons	x
Fuel Oils	xx	Water under 80°C	xxx	Ozone & Sunlight	x
Animal Oils	xxxx	Water over 80°C	x	Temperature range °C	-35 +120
Brake Fluid	-	Alcohols	xx	Electr. properties	-
Silicone & Grease	xx	Ketone	-	Compression sets	xxx
Gasoline	xxx	Acid (concentrated)	-	Flame resistance	No
Aromatic fluids up to 50 %	xx	Acid (diluted)	x		
Kerosene	xxx				

Key: xxxx very good --> x satisfactory - not suitable.

Storage: protect against UV-light; store in a dry and dark place (all boxes are marked)

Seals in other materials on request.

● Conversion table

Multiply	by	To get
millimeter (mm)	.03937	inch (in)
inch (in)	25,4	millimeter (mm)
kilogram (kg)	2,2046	pound (lb)
pound (lb)	0,4536	kilogram (kg)
Newton (N)	0,2248	pound-force (lbf)

DEJOND IS NOT LIABLE FOR ANY PRINTING ERRORS AND RESERVES THE RIGHT TO CHANGE ALL DATA CONTAINED IN THIS CATALOGUE WITHOUT PRIOR NOTICE

General conditions available on our website www.dejond.com

Any dispute will fall within the exclusive jurisdiction of the courts of Antwerp



DEJOND

COLD FORMING

青岛震坤行贸易有限公司

tel:0532-85081293

fax:0532-83027892

e-mail:thinkingtrading@126.com

www.zhenkunhang.com

www.zhenkunhang.cc

